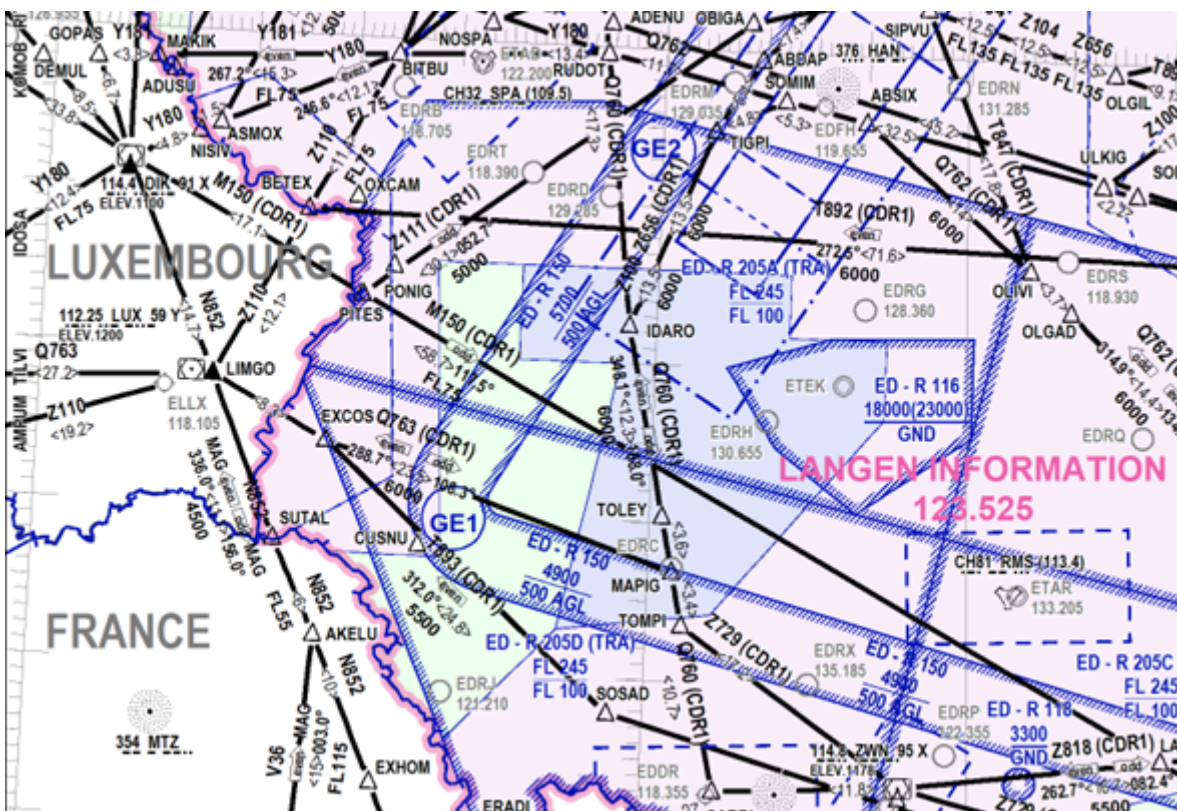


# Airspace class E

## General

In Germany, airspace E usually extends from 2500 ft GND to FL100, provided it is not interrupted by airspace C or D. In the Alps, the airspace is raised to FL130, and lowered in the vicinity of commercial airports. There are 3 different lower limits. These are color-coded on the 1:1 000 000 route maps.

- 1000 ft AGL - pink
- 1700 ft AGL - blue
- 2500 ft AGL - green



*With the kind permission of DFS Deutsche Flugsicherung GmbH. Not to be used for navigational purposes!*

Airspace E is controlled airspace.

## Rules

Luftraum	Art des Fluges	Staffelung	Service	Geschwindigkeit	COM	Freigabe
E	IFR & VFR	IFR – IFR Alle Flüge - Verkehrsinfo, soweit möglich	IFR – ATC VFR – FIS	Alle Flüge – 250 kt IAS unter FL100	IFR	IFR

Important: In contrast to the other controlled airspaces, VFR traffic neither needs an active radio communication with air traffic control nor clearance to enter the airspace.

## VMC Minima

As in all other airspaces, the following minima apply:

- Flight visibility above FL100: **8 km**
- Visibility below FL100: **5 km**
- Horizontal distance from clouds: **1500 m**
- Distance from clouds vertically: **1000 ft**

## Further links

- [Classification of Airspace - Skybrary](#)