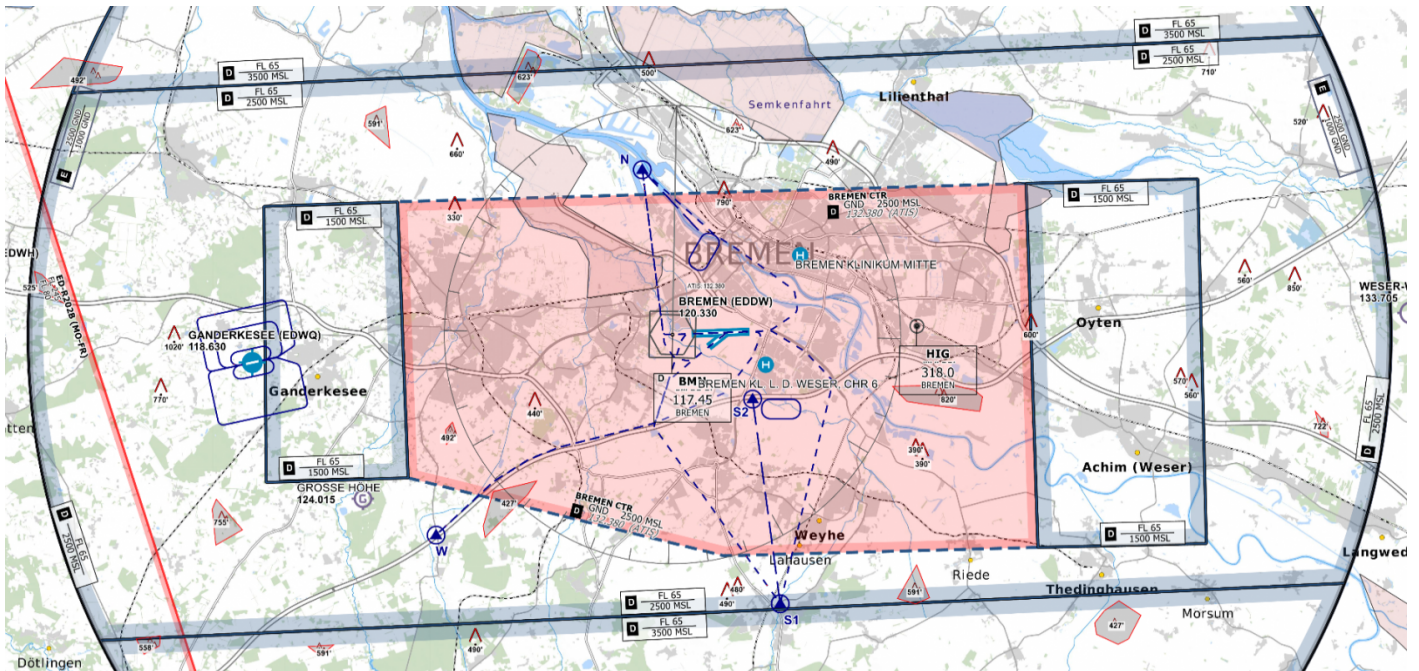


VFR Traffic

As you can see on the map Bremen has 4 Visual Reporting Points (VRPs). When entering or leaving the CTR please use the VRPs. State your desired VRP when contacting ATC. Cross VRP in Bremen 2000ft or below.



Control Zone Bremen - © openflightmaps.org

VRP	N	W	S1	S2
NAV	West dock connected to river Weser	Highway exit A1 near Groß Ippener	Turn of B6 near city Barrien	Highway exit A1 on B6 near Brinkum

Feel free to cross the CTR to have a look at the places Bremen and the surrounding area is known for!

Revision #2

Created 25 October 2022 14:39:01 by 1288197

Updated 2 November 2022 18:52:25 by 1288197