

Euroscope Installation

Euroscope is a very powerful software used for the Air Traffic Controller (ATC) on the Vatsim network. It is important to setup the software correctly, before controlling. It will take some time until you feel familiar with it.

Installation

Downloads – both are required

Visual C++ Redistributable x86:

https://aka.ms/vs/17/release/vc_redist.x86.exe

EuroScope Version 3.2.3.2:

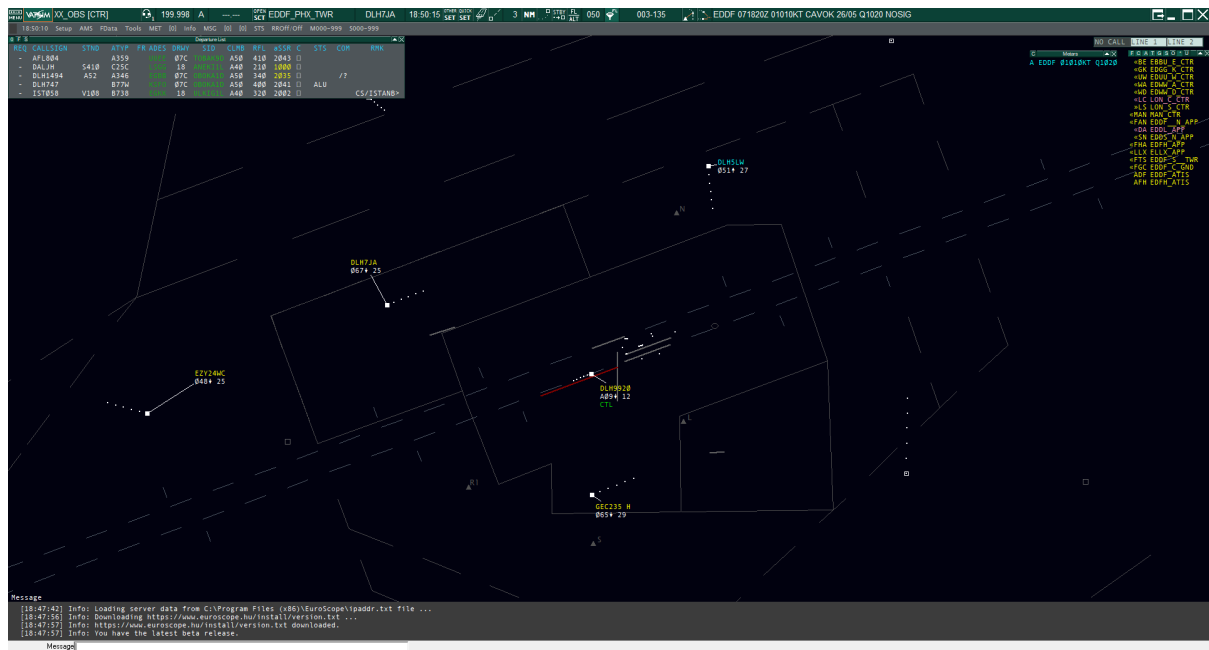
<https://euroscope.hu/install/EuroScopeSetup.3.2.3.2.msi>

The currently tested and approved EuroScope version is 3.2.3.2.

There are newer versions (3.2.4+), however these versions all have been causing various issues and are not approved for usage in Germany.

Versions 3.2.3 and older will also not work due to new VATSIM authentication requirements. For further information check your respective NAV team's announcements.

Please install the software into a directory of your choice.



Audio for Vatsim (AfV)

To use **voice communication** you have to install the additional software [Audio for Vatsim](#). After that, run the software and check the settings for your audio devices and enter your ID and password. While controlling, it's recommended to run the software as administrator to work correctly in the background.

For **push to talk** we recommend the **left ctrl (Strg)** button at your keyboard.

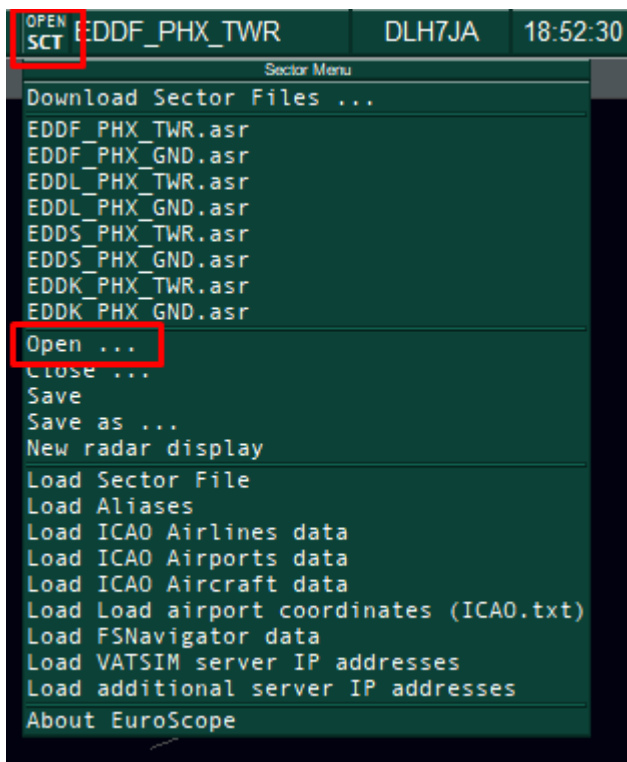
If you have a primary frequency set in Euroscope, AfV will set it's frequency automatically after clicking on "connect".

Initial Setup

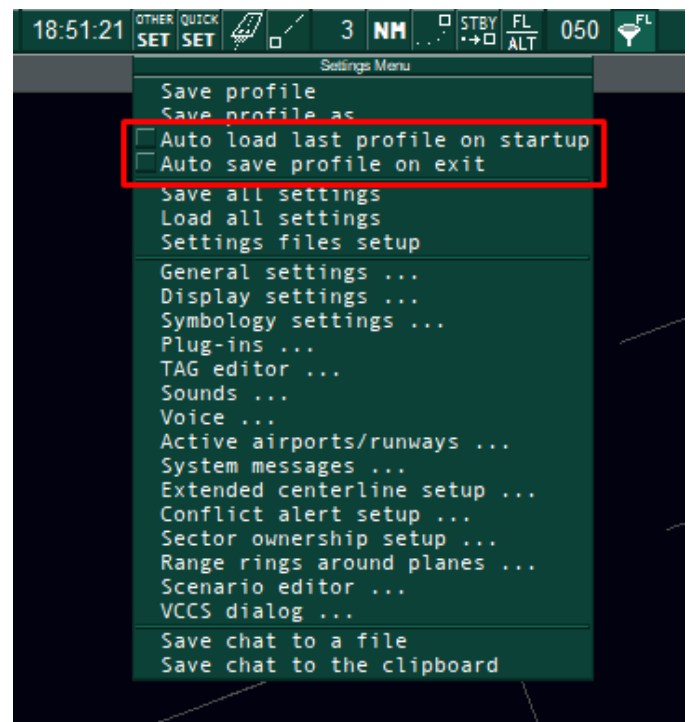
After installing the software you still need the sectorfile, where you get all local data from you need for controlling. **Additional to the sectorfile we offer a variety of files and plugins pre installed, so that this package is ready to use for you.** You can download the different packages for each FIR at files.aero-nav.com/EDXX.

Download the package and create a folder anywhere you like (recommended at C:\Users\me\Documents\EuroScope). For a better overview we recommend to name the folder according to the FIR where the data is coming from (EDGG, EDMM or EDWW). Copy all provided data into the folder in the same structure as download, as it will not work otherwise!

Select a Profile: After you've done the above steps, you can open Euroscope and you are prompted to select a profile (.prf file). Choose one of the provided ones and you are ready to use Euroscope and all its features. Different views and airports are already predefined. Therefore you have to click on "OPEN SCT" in the green colored menu bar and select one of the listed .asr files or load one of other provided files via the "Open..." menu.



Open a new .asr file for different views



Disable "auto load" and "auto save"

If you would like to open a different profile over the time or you have some problems with different views (e.g. you have chosen the "wrong" profile), it's highly recommended to disable the "Auto load last profile on startup" and "Auto save profile on exit" items to always select the profile manually.

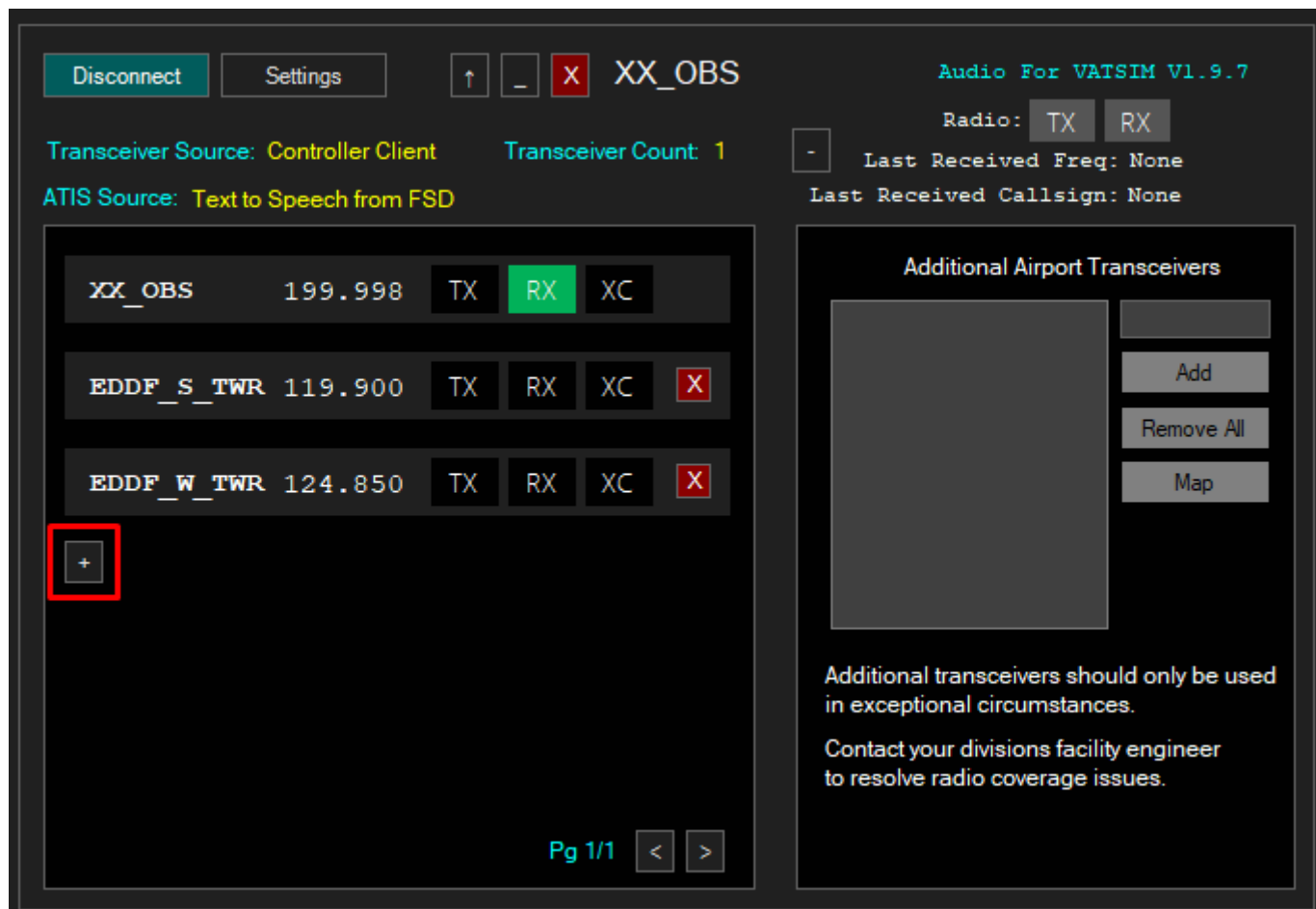
You can find these options at **OTHER SET** at the top menu bar of Euroscope.

Login as Observer

You can always login as observer (OBS). Open your profile of choice and click on "Connect" at the upper left corner. As Callsign we suggest to use `XX_OBS` with `XX` replaced by your initials (the `_OBS` at the end is required). Enter your ID and password, check your rating (probably observer), choose your server and you can connect to Vatsim.

Listen to the Frequency: In order to listen to other controllers, you have to open AfV and click on connect thereafter. Then you need to click on the small "+" to enter the station Login into the search window you would like to listen to (e.g. `EDDF_S_TWR`). You will get a selection of

frequencies to listen to. Click on *RX* and you will hear the controller and the pilots on that frequency.



Audio for Vatsim when logged in as Observer

Select the active airport and runways: It is also recommended to activate the airport and it's select runways. Only if the airport is selected, you can see information in the different lists (e.g. you will only see Frankfurt departures in the departliste list, if EDDF is activated). Simply click on the runway symbol at the menu bar at the top, activate the airport for ARR and DEP, chose the runway and you can see everything the controller sees as well.

Reset visual point: If you can't see any traffic as Observer even if there should be some, it might be your visual point is to far away from the airport you are looking at.

To reposition your center of view, enter **.vis** into the command line at the bottom and click into the scope. Your center of view is repositioned thereafter.

Connect dialog

×

Select connection mode: Direct to VATSIM

Server connection

Callsign XX_OBS

Facility Observer

Real name Max Mustermann

Rating Observer

Certificate 123456

Server GERMANY

Password xxxxxxxxxx

☒ Connect to VATSIM

Logoff time (4 digits in Z)

Save Profile Delete Profile

INFO line 2

INFO line 3

INFO line 4

Range 100

Status

Connect Disconnect

Proxy connection

Server localhost

Status Proxy server is running

Start Proxy Server

Stop Proxy Server

Simulator server

Scenario

Browse

Publish simulation data: Never

Logging and playback

Logfile c:\EuroScope20220807.txt

Browse

Start logging Stop logging

Playback

Play 2X 4X 8X 16X 32X Pause Stop

+1 +2 +5 +10 +20 +30 +45 +60 +90 +120

Browse

Close

Euroscope connection dialog when login as Observer

Revision #20

Created 9 August 2022 07:43:50

Updated 1 September 2024 17:18:28 by 1586741