

EDFM - Mannheim City Airport

- [Overview](#)
- [Tower](#)
- [Arrival Sector Neckar Low](#)

Overview

Mannheim City is an unrestricted airport and **part of the [S1 minor program](#)**. TWR can be staffed by all controllers with an **S1** rating or higher who have passed the **required moodle courses**. The Neckar Low sector (APP) can be staffed by all controllers with an **S3** rating or higher.

ATC Stations

Station	Station ID	Login	Frequency	Remark	Endorsement
ATIS	AFM	EDFM_ATIS	132.415	--	--
Tower	FMT	EDFM_TWR	129.780	--	unrestricted: EDFM CBT
Neckar Low sector	NKRL	EDFM_NKL_APP	129.355	--	unrestricted: no course

Quickview

TOWER QUICKSHEET MANNHEIM CITY AIRPORT (EDFM)

up to date for: AIRAC 2309

Runway 27	↑ climb via SID
Runway 09	

ENROUTE CLEARANCE

5000ft	3C	UMDAS	3W	
5000ft	3C	ROLSO	3W	↑ 5000ft
5000ft ↑	3C	RINEX	3W	
5000ft	8C	MANEM	8W	
5000ft	6C	OLIVI	4W	5000ft

! IFR departures require departure release by Langen Radar prior to takeoff clearance

HANDOFFS

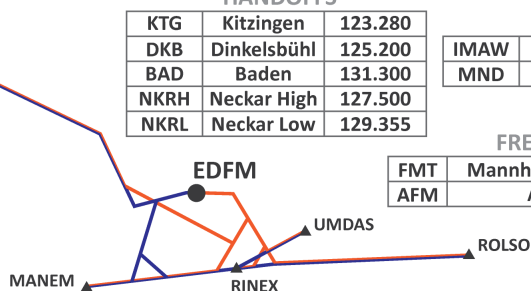
KTG	Kitzingen	123.280
DKB	Dinkelsbühl	125.200
BAD	Baden	131.300
NKRH	Neckar High	127.500
NKRL	Neckar Low	129.355

NAV AIDS

IMAW	LOC 27	108.55
MND	DME	113.55

FREQUENCIES

FMT	Mannheim Tower	129.780
AFM	ATIS	132.415



! max. MTOW: 5.700kg

VISUAL CIRCLING



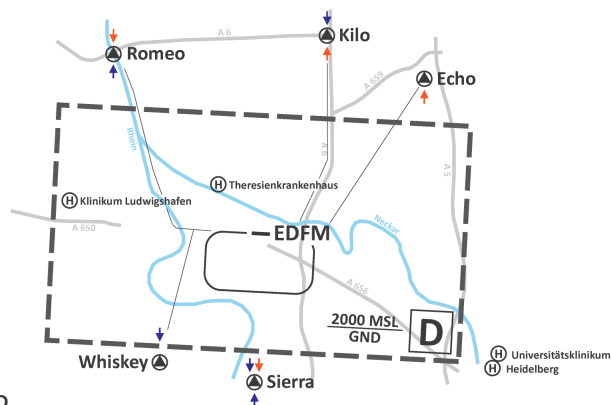
! max. MTOW: 10.000kg
or

Dornier 328-100	D328
Dash 8-100	DH8A
Dash 8-300	DH8C
ATR 42-500	AT45
Falcon 50	FA50
Falcon 2000	F2TH
Falcon 900 EX/DX	F900
Challenger 300	CL30
Cessna 680	C680
Embraer Legacy 150	E450
Embraer Legacy 500	E500

SEPARATION

M	←	L	5 NM
H	←	L	6 NM
H	←	M	5 NM
H	←	H	4 NM
J	←	L	8 NM
J	←	M	7 NM
J	←	H	6 NM

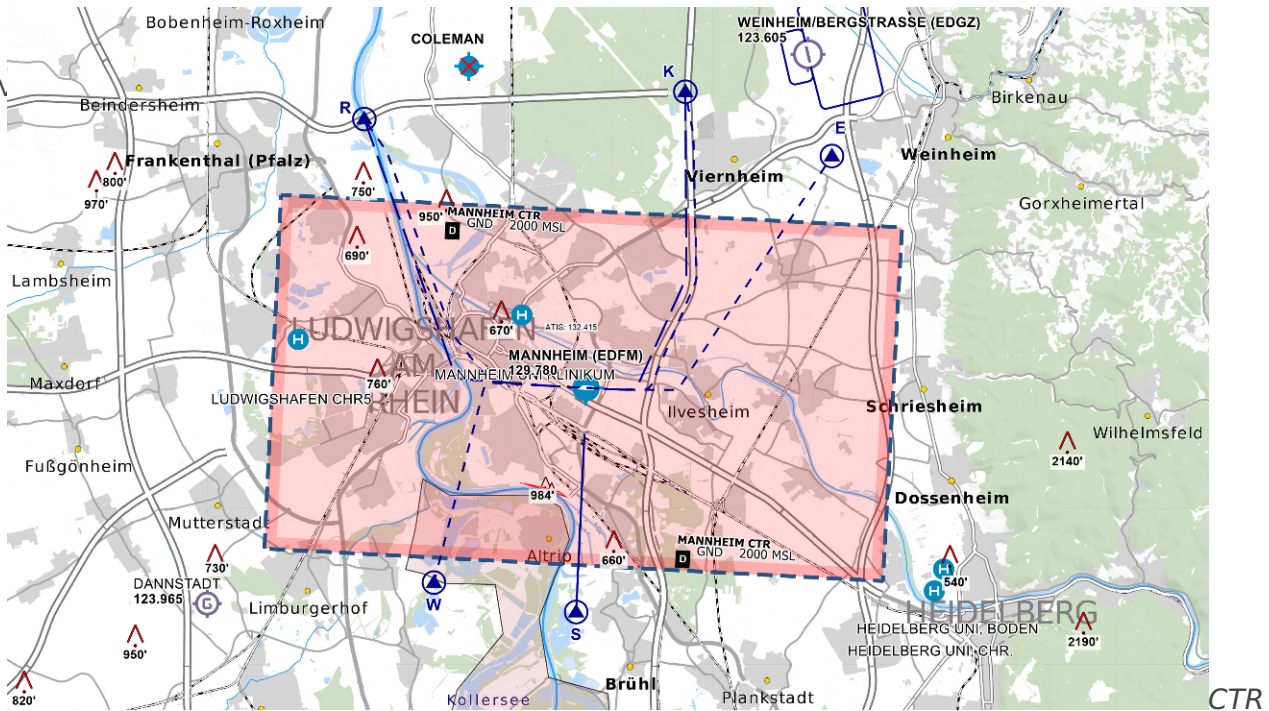
! 5 NM spacing between departures on the same SID



click on the image to open the printable Quicksheet

Tower

The M



Mannheim/City - © openflightmaps.org

Authorized aircraft

Due to the small size of Mannheim/City, there are restrictions on which aircraft types can be flown at the airport:

- Airplanes up to **10.000 kg MTOW**
- Donier 328-100 (**D328**)
- Dash 8-100 and 300 (**DH8A, DH8C**)
- ATR 42-500 (**AT45**)
- Falcon 50, 2000, 900 EX/DX (**FA50, F2TH, F900**)
- Challenger 300 (**CL30**)
- Cessna 680 (**C680**)
- Embraer Legacy 450, 500 (**E450, E500**)

Pilots flying unsuitably large aircraft (e.g. A320/B737) should be reminded about the small size of the airport and its short runway length. However, pilots flying aircraft that are not part of the above list, but **similar in size and performance** (e.g. C700) can usually still be accepted in the VATSIM environment.

Additionally, the **grass runway** can only accommodate aircraft up to **5.700 kg MTOW** (all German aircraft registrations except D-Axxx, D-Bxxx, and D-Cxxx).

Parking Positions

Preferred parking for Airlines are the two taxi-out positions in front of the Terminal. Other aircraft can be parked either at the positions 1-5, the hangars or at the grass area. For refueling the gas station east of taxiway A is used.

IFR Procedures

Instrument approach procedures are only available for runway 27: a localizer approach and an RNP approach. Due to its lower minima and higher lateral precision, the localizer approach is preferred.

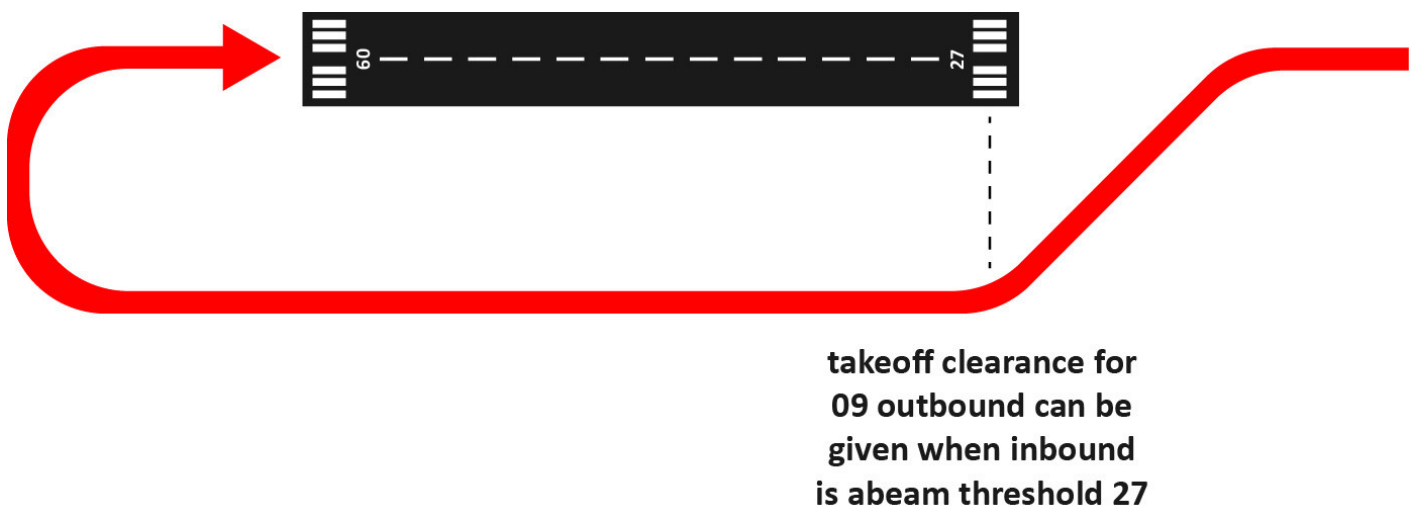
Departure Spacing

Two aircraft on the same SID require a minimum spacing of 5 NM.

Visual circling

Since the instrument approach procedures are only available for runway 27, IFR arrivals need to fly a **visual circling maneuver** during 09 operations. This maneuver is **only allowed South of the airport**.

To **ensure separation between inbounds and outbounds**, a takeoff clearance for a 09 departure can only be issued once the inbound has passed abeam the threshold of runway 27.



To **remind pilots that they need to fly a visual circling**, they should be asked to report breaking off or when reaching the right downwind.

“ **ATC:** JMP902, report breaking off.

ATC: JMP902, report right downwind.

In the event of a go around, the pilot is expected to rejoin the right downwind and from there join the published missed approach procedure. However, since many pilots on VATSIM will be unfamiliar with the details of visual circling procedures, they should be told what to do:

“ **ATC:** JMP902, join right downwind runway 09.

And once the aircraft is on right downwind runway 09:

“ **ATC:** JMP902, follow the published missed approach procedure.

VFR Procedures

Traffic circuits

Due to noise abatement, the **Southern traffic circuit should be used whenever possible**. The Northern traffic circuit should only be used if the Southern one is unavailable. Additionally, VFR aircraft are expected to avoid overflying the cities of Mannheim and Ludwigshafen as well as the surrounding villages.

Reporting point

Reporting point	Use	Location
R	Exit to the NW (27 ops) Entry from the NW (09 ops)	highway A6 bridge over the Rhine river
K	Exit to the N (09 ops) Entry from the N (27 ops)	highway intersection A6 and A67
E	Exit to the NE (09 ops)	highway intersection A5 and A659
W	Exit to the SW (27 ops)	between lakes North of Waldsee
S	Exit to the S Entry from the S (27 ops)	between Brühl and Rhine river

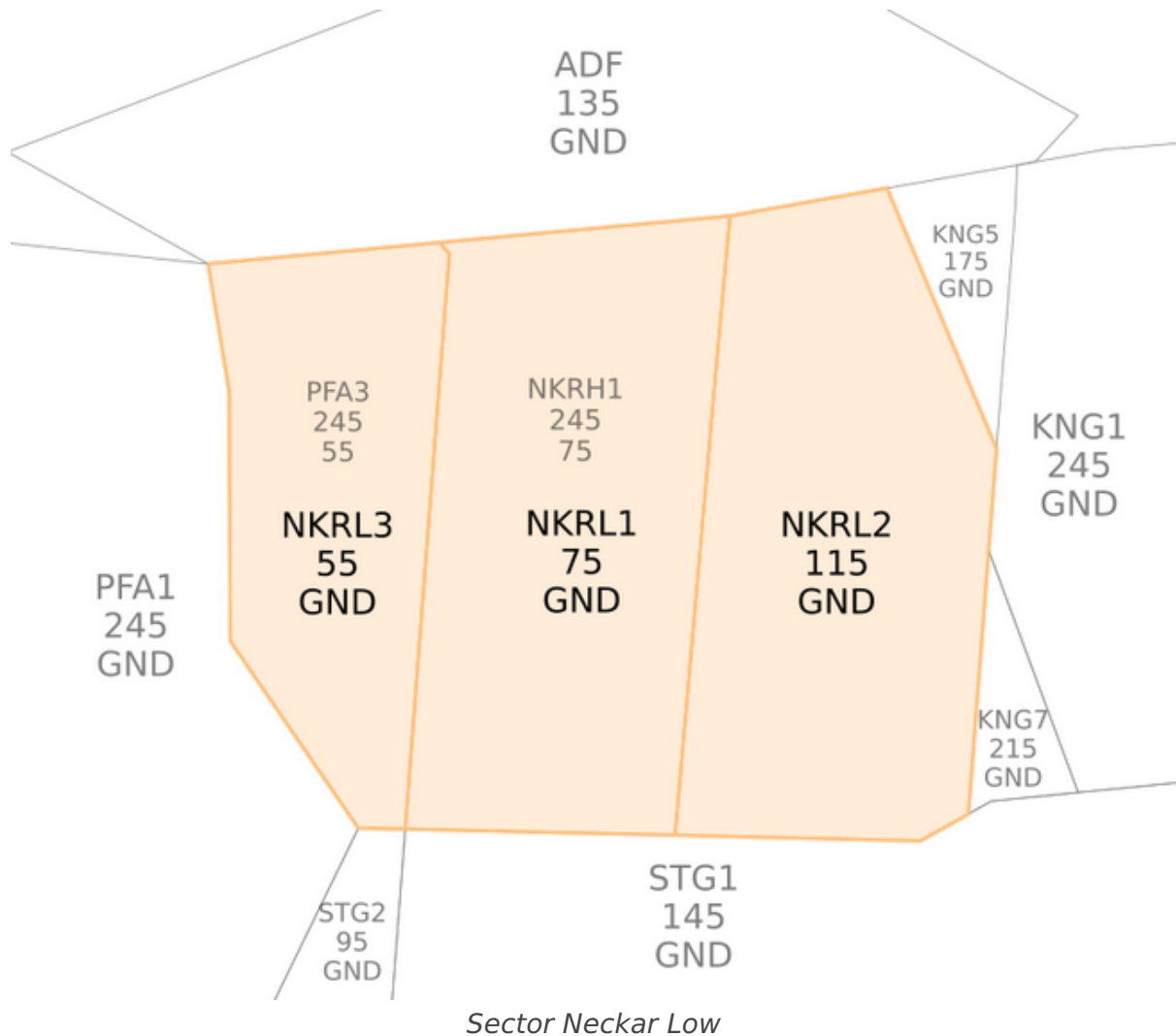
Auto-Handoff

Mannheim utilizes an auto-handoff procedure for IFR departures where **Tower will not hand off outbounds to the approach/center controller**. Make sure to set the correct departure frequency in the ATIS.

Outbounds should contact APP/CTR **immediately when airborne** unless explicitly told to remain on Tower frequency.

Arrival Sector Neckar Low

The sector Neckar Low (NKRL) is **responsible for all Mannheim/City (EDFM) departures and arrivals** from GND up to FL55/FL75/FL115. Usually, this sector is combined with other Langen sectors.



Approaches

Mannheim/City only has instrument approaches for runway 27. Both the LOC and RNP approach have a **non-standard 3.7° glide path**.

During 09 operations, arrivals need to fly a **visual circling procedure** south of the airport. [The clearance for the visual circling has to be part of the approach clearance.](#)

ATC: JMP902, cleared localizer approach runway 27, followed by circling runway 09.

Alternatively, **upon coordination with Tower**, pilots can be cleared for a straight-in visual approach into runway 09.