

# EDSB - Karlsruhe/Baden- Baden

- [Overview](#)
- [Ground and Tower](#)
- [Arrival](#)

# Overview

**Karlsruhe/Baden-Baden is an unrestricted airport** and **part of the S1 minor program**. All positions can be staffed by all controllers with an **S1** rating or higher who have passed the **required moodle courses**.

## Karlsruhe/Baden-Baden ATC Stations

Station	Station ID	Login	Frequency	Remarks	Endorsement
ATIS	ASB	EDSB_ATIS	121.280	--	--
Ground	SBG	EDSB_GND	121.830	--	unrestricted: <u>EDSB CBT</u>
Tower	SBT	EDSB_TWR	134.105	--	unrestricted: <u>EDSB CBT</u>

All aerodrome stations at Karlsruhe/Baden-Baden use the **callsign "Baden"**, e.g. "Baden Tower".

## Quickview

TOWER QUICKSHEET  
KARLSRUHE/BADEN-BADEN AIRPORT (EDSB)  
409 ft

up to date for: AIRAC 2309

Runway 21	↑ climb via SID
Runway 03	

ENROUTE CLEARANCE

FL70 ↑	1Y	GAGSI	2Z	FL70
	5N		6P	↑ FL70
	1Y	TUBLO	2Z	FL70
	9N			
	1Y	STR (Strasbourg)	1Z	FL70
			6P	FL70

! IFR departures require departure release  
by Langen Radar prior to takeoff clearance

FREQUENCIES

SBT	Baden Tower	134.105
SBG	Baden Ground	121.830
ASB	ATIS	121.280

NAV AIDS

IKBW	ILS or LOC 21	108.75
IKBE	ILS or LOC 03	109.95
KBD	DME	115.80
KBA	NDB	431

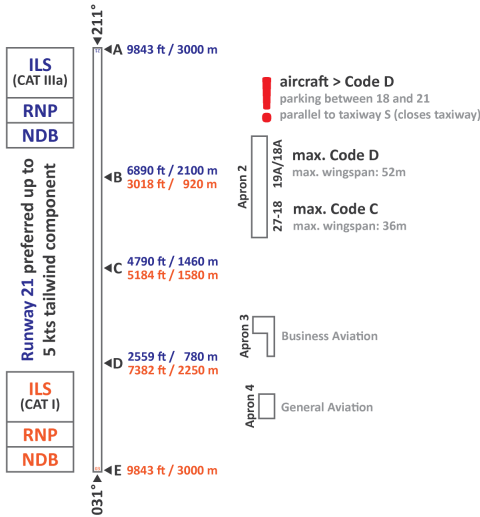
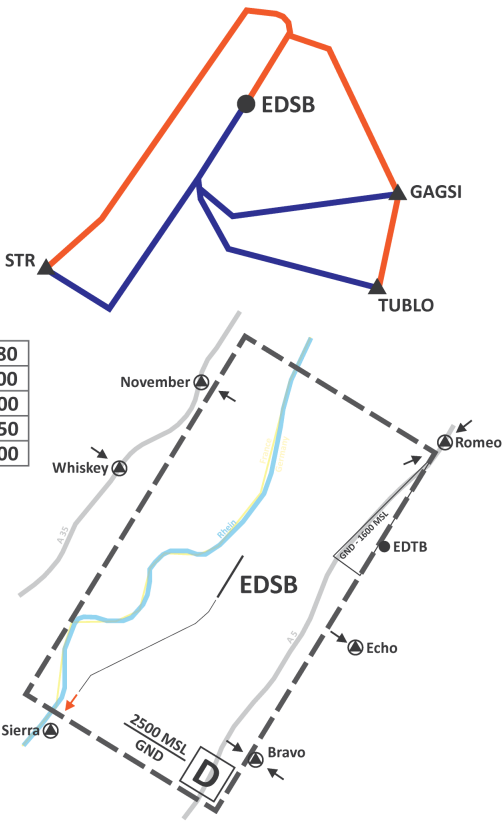
HANDOFFS

KTG	Kitzingen	123.280
DKB	Dinkelsbühl	125.200
BAD	Baden	131.300
STG	Stuttgart	125.050
REU	Reutlingen	119.200

SEPARATION

M	←	L	5 NM
H	←	L	6 NM
H	←	M	5 NM
H	←	H	4 NM
J	←	L	8 NM
J	←	M	7 NM
J	←	H	6 NM

! 5 NM spacing between  
departures on the same SID



[click on the image to open the printable Quicksheet](#)

# Ground and Tower

## SID Assignment

Usually the RNAV SID (Designator Y and Z) should be used primarily. Non-RNAV capable aircraft will get SIDs with Designator N or P.

## Ground

Baden Ground is responsible for startup and enroute clearance and all aircraft movements at the airport.

## Parking Position

All positions at EDSB are taxi-out positions, no pushback is required. Positions 18 - 27 are only for Code C aircraft (max. B739/A321), Positions 18A and 19A can be used up to Code D (B764). Bigger aircraft can park between Positions 18 and 21, parallel to the taxiway, that is closed as long as this traffic is parked there. Aprons 4 is close to the GAT used for GA traffic, Apron 3 should be used for Business GA traffic.

## Preferred Runway

RWY 21 is preferred for usage up to a tailwind component of 5 knots.

**Approaches:** For both runways ILS (RWY 21 CAT III, RWY 03 CAT I), RNP and NDB approaches are available.

## VFR Traffic

Karlsruhe CTR is a class D airspace from ground to 2500 ft MSL.

**Leaving CTR** via the following routings: Bravo, Echo, November, Romeo or Sierra (S only RWY 21)

**Entering CTR** via the following routings: Bravo, Romeo or Whiskey

**Traffic Pattern:** Traffic Pattern east of the airport for traffic > 5,7 t MTOW (German aircraft registration D-Cxxx, D-Bxxx, D-Axxx) are only authorized at minimum 2000ft MSL and should not cross the highway (A5).

**Baden-Oos EDTB:** Traffic in the pattern, approaching or departing Baden-Oos airfield does not need to contact Karlsruhe Tower. This traffic has to stay below 1600ft MSL.

## IFR Departures

Departing IFR traffic switches to departure frequency without a separate instruction, immediately when airborne.

All departures shall be separated by radar separation or wake turbulence separation, whichever is greater. Departures flying the same SID shall be spaced by at least 5NM when the following aircraft overflies the departure end of runway.

## Auto-Handoff

Karlsruhe utilizes an auto-handoff procedure for IFR departures where **Tower will not hand off outbounds to the approach controller**. Make sure to set the correct departure frequency in the ATIS.

Outbounds should contact APP **immediately when airborne** unless explicitly told to remain on Tower frequency.

# Arrival

The primary arrival sector for Karlsruhe/Baden-Baden is Strasbourg Approach (LFST\_APP). If Strasbourg is not online, Stuttgart Arrival (STG) is responsible for all arrivals and departures.

There are ILS, RNP and NDB approaches available for each runway, while the ILS RWY 21 is the only one that can be used during LVO.

## Low Visibility Operations (LVO)

RWY 21 is certified for CATII/III, RWY 03 for CAT I only.