

EDDF - Overview

Frankfurt/Main airport is one of the largest airports in Europe and the world. Together with London Heathrow, it is also the busiest airport on the VATSIM network.

All stations at Frankfurt require a Tier 1 endorsement ([mentoring session necessary](#)).

DEL and GND positions require the EDDF_GNDDEL endorsement which can be acquired by all controllers with an **S1** rating or higher. TWR requires the EDDF_TWR endorsement which can be acquired by all controllers with an **S2** rating or higher. All APP/DEP positions require the EDDF_APP endorsement which can be acquired by all controllers with an **S3** rating or higher.

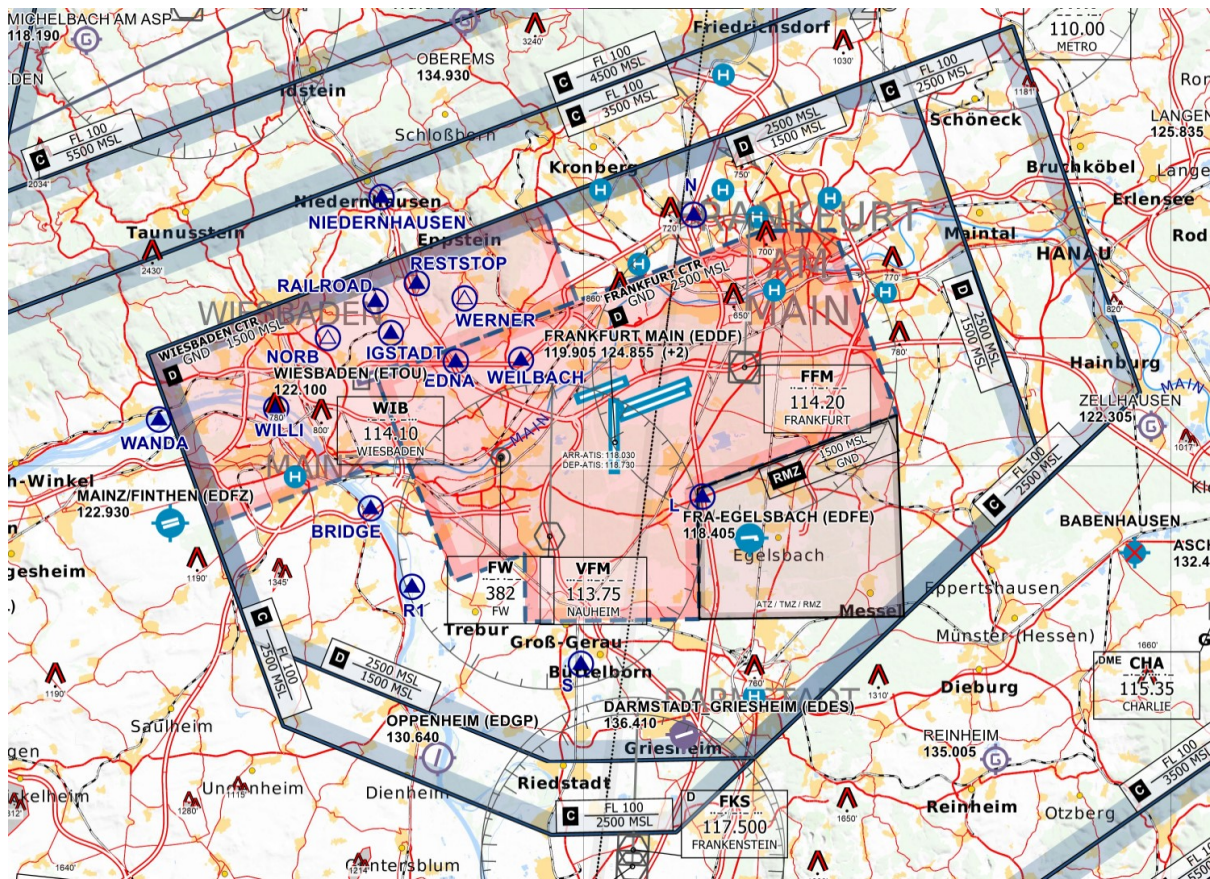
Training: Controllers with the S1 rating can staff TWR positions during their training (active EDDF_TWR solo endorsement required). Controllers with the S2 rating can staff APP/DEP positions during their training (active EDDF_APP solo endorsement required).

Frankfurt/Main ATC Stations

Station	Station ID	Login	Frequency	Remark	Endorsement
DEP-ATIS	ADDF	EDDF_D_ATIS	118.730	--	--
ARR-ATIS	AADF	EDDF_A_ATIS	118.030	--	--
Delivery	DFC	EDDF_DEL	122.035	--	Tier 1: EDDF_GNDDEL
Coordinator	--	EDDF_CO_DEL	--	event position, monitors 122.035	Tier 1: EDDF_GNDDEL
Apron					
Center Apron	DFGC	EDDF_C_GND	121.855	primary	Tier 1: EDDF_GNDDEL
West Apron	DFGW	EDDF_W_GND	121.755	secondary	Tier 1: EDDF_GNDDEL
East Apron	DFGE	EDDF_E_GND	121.955	tertiary	Tier 1: EDDF_GNDDEL
South Apron	DFGS	EDDF_S_GND	121.655	not yet used in reality	Tier 1: EDDF_GNDDEL
Deicing	DFGI	EDDF_ICE_GND	121.985	--	Tier 1: EDDF_GNDDEL
Tower / Ground					

Center Tower	DFTC	EDDF_C_TWR	118.780	primary	Tier 1: EDDF_TWR
West Tower	DFTW	EDDF_W_TWR	124.855	secondary	Tier 1: EDDF_TWR
North Tower	DFTN	EDDF_N_TWR	136.500	tertiary	Tier 1: EDDF_TWR
South Tower	DFTS	EDDF_S_TWR	119.905	--	Tier 1: EDDF_TWR
Supervisor	--	EDDF_CO_TWR	--	event position, airport-wide flow control and decision making	Tier 1: EDDF_TWR
Ground	DFG	EDDF_GND	121.805	--	Tier 1: EDDF_GNDDEL
Arrival / Departure					
North Approach (Pickup)	DFAN	EDDF_N_APP	120.805	primary arrival	Tier 1: EDDF_APP
South Approach (Pickup)	DFAS	EDDF_S_APP	125.355	--	Tier 1: EDDF_APP
North Arrival (Feeder)	DFANT	EDDF_H_APP	127.280	primary feeder	Tier 1: EDDF_APP
South Arrival (Feeder)	DFAST	EDDF_L_APP	118.505	--	Tier 1: EDDF_APP
North Departure	DFDN	EDDF_N_DEP	120.155	--	Tier 1: EDDF_APP
South Departure	DFDS	EDDF_S_DEP	136.130	primary departure	Tier 1: EDDF_APP

CTR Frankfurt/Main



Frankfurt/Main D-CTR - © openflightmaps.org

Airport Capacity

Outbound EDDF		Inbound EDDF	
RWY 18	40 / hr every 2 min + 10 extra movement	alternating	35 - 40 / hr
RWY 25C / 25L	25 / hr every 3 min + 5 extra movement	parallel independent	50 - 60 / hr
RWY 07C / 07R	40 / hr every 2 min + 10 extra movement	single runway	25 - 30 / hr
Sector Arrival South (DFAS): 8 - 10 aircraft at the same time			
Sector Arrival North (DFAN): 10 - 12 aircraft at the same time			

- **RWY 25:** 10 - 12 active startup approvals at the same time
- **RWY 18/07:** up to 15 active startup approvals at the same time

Revision #33

Created 12 July 2022 09:30:48 by Guest

Updated 23 January 2025 19:06:48 by 1288197