

EDDK - Overview

Köln/Bonn is a complex airport with crossing runways and very little space on the ground and in the TMA. On VATSIM, it usually has a medium amount of traffic but will regularly operate at or even above capacity during events.

Köln/Bonn is an unrestricted airport. DEL and GND are unrestricted and can be staffed by all controllers with an S1 rating or higher who have passed the **required moodle courses**. TWR position requires the EDDK_TWR Tier 1 endorsement which can be acquired by all controllers with an **S2** rating or higher. All radar positions require the EDDK_APP Tier 1 endorsement which can be acquired by all controllers with an **S3** rating or higher.

Due to the high amount of complexity of the airport, it is highly recommended that **S1-rated controllers** have gained a great deal of experience at other unrestricted airports before staffing positions at Köln/Bonn.

Training: Controllers with the S1 rating can staff TWR during their training (active EDDK_TWR solo endorsement required). Controllers with the S2 rating can staff APP positions during their training (active EDDK_APP solo endorsement required).

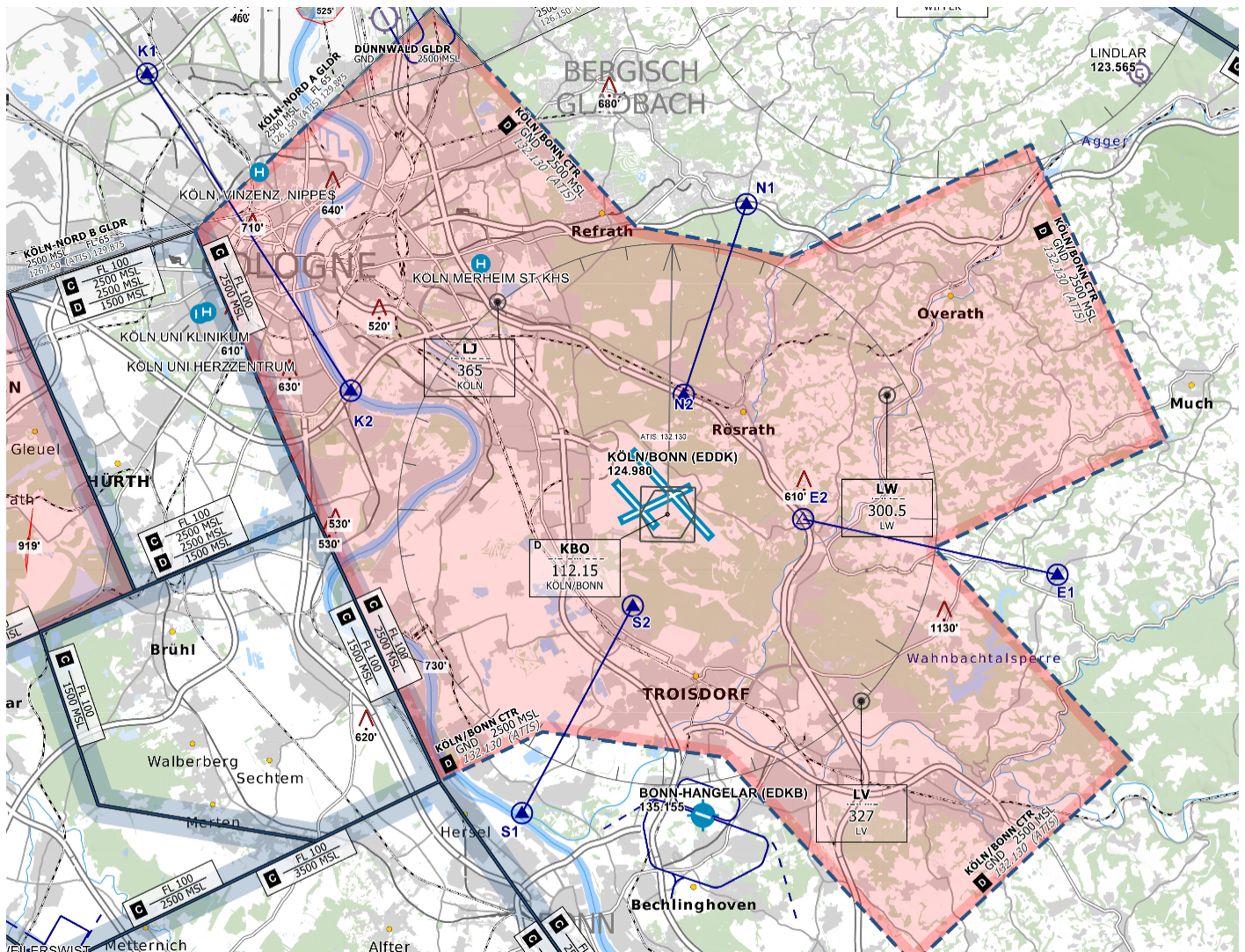
With AIRAC 2404, the runway designators in Köln/Bonn were changed from 14/32 to 13/31. This can cause issues for pilots using MSFS if they are using AIRAC 2404 or later but have a scenery with the old designators as **they will not be able to select certain runway-specific procedures such as the SID** in their FMS. If a pilot reports this issue, **please refer them to [this addon](#)** which will allow them to select runway-specific procedures even with an outdated scenery. Whenever possible, **controllers should find workarounds that do not require pilots to restart their simulator**, e.g. using a conventional SID to NVO or WYP, potentially followed by radar vectors.

Köln/Bonn ATC Stations

| Station | Station ID | Login | Frequency | Remarks | Endorsement |
|----------|------------|-----------|-----------|---------|---|
| ATIS | ADK | EDDK_ATIS | 132.130 | -- | -- |
| Delivery | DKC | EDDK_DEL | 121.855 | -- | unrestricted: EDDK CBT Delivery |

| | | | | | |
|-----------------------------|------|--------------|---------|-----------|---|
| Ground | DKG | EDDK_GND | 121.730 | -- | unrestricted: <u>EDDK CBT</u> <u>Delivery & EDDK</u> <u>CBT Ground</u> |
| Tower | DKT | EDDK_TWR | 124.980 | -- | Tier 1: <u>EDDK_TWR</u> |
| Approach (Pickup) | DKA | EDDK_APP | 135.350 | -- | Tier 1: <u>EDDK_APP</u> |
| Arrival (Feeder) | DKAT | EDDK_F_APP | 121.055 | secondary | Tier 1: <u>EDDK_APP</u> |
| Nörvenich sector | NOR | EDDK_NOR_APP | 127.365 | primary | Tier 1: <u>EDDK_APP</u> |

Controlzone



Cologne-Bonn Controlzone (D-CTR) - © openflightmaps.org

