

Overview

Büchel is a Bundeswehr base in Büchel. The airfield was originally built by the French Army but transferred to Germany shortly after its completion. Today, the airport serves as a base for the Taktische Luftwaffengeschwader 33, although all of its aircraft are currently stationed at Nörvenich air base while Büchel's runway is undergoing construction work; once this construction work is completed, the Luftwaffe plans to station new F-35 fighter jets here as part of NATO's nuclear sharing concept.

As Büchel is a military airport, charts can't be found in the normal AIP. They are accessible through the MIL AIP, GEMIL FLIP VAD, and CENOR FLIP in the [milais](#).

Büchel is an unrestricted airport. The Tower position can be staffed by all controllers with an **S2** rating or higher. The radar position can be staffed by all controllers with an **S3** rating or higher. Additionally, controllers should closely familiarize themselves with military procedures before staffing the airport.

Büchel's runway is currently **closed IRL** due to construction work on the runway. Due to this, the **parallel taxiway is used as a substitute runway** for VFR only; departing and arriving traffic has to pick up/cancel IFR after departure/before landing.

Büchel ATC Stations

Station	Station ID	Login	Frequency	Remarks	Endorsement
Tower	TSBT	ETSB_TWR	131.460	military station	unrestricted: no course
Arrival	TSBA	ETSB_APP	130.155	military station	unrestricted: no course

Quickview

TOWER QUICKSHEET FLIEGERHORST BÜCHEL (ETSB)

up to date for: AIRAC 2405

Runway 21	↑ climb via SID
Runway 03	

ENROUTE CLEARANCE

min. 4000ft ↑ **SB103** any **SB121** min. 4000ft ↑

! IFR departures require departure release
by Büchel Radar prior to takeoff clearance

HANDOFFS

KTG	Kitzingen	123.280
GIN	Gießen	124.730
RUD	Rüdesheim	133.435
EIF	Eifel	125.600
TSBA	Büchel Radar	130.155

FREQUENCIES

TSBT	Büchel Tower	131.460
------	--------------	---------

TACAN

027° ► 03

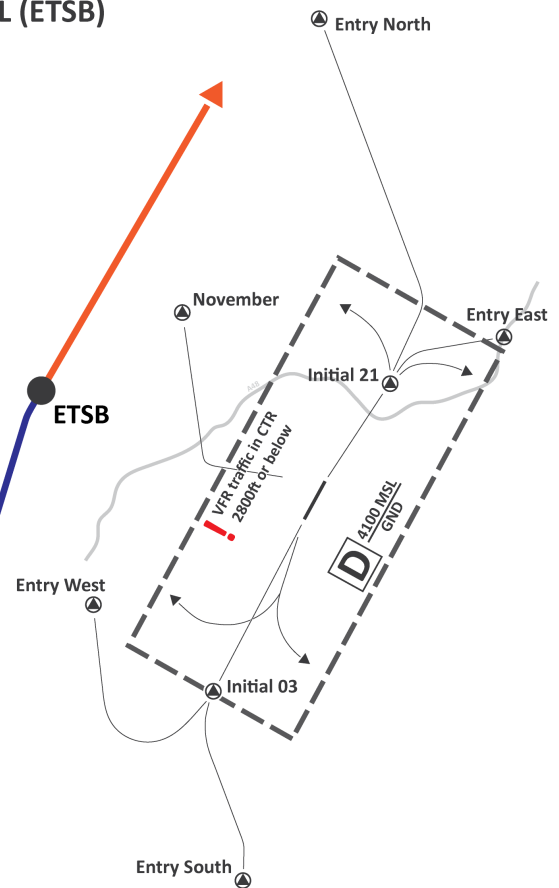
2507m x 45m

TACAN

21 ► 207°

SEPARATION

M	↔	L	5 NM
H	↔	L	6 NM
H	↔	M	5 NM
H	↔	H	4 NM
J	↔	L	8 NM
J	↔	M	7 NM
J	↔	H	6 NM



click on the image to open the printable quicksheet

Revision #1

Created 16 May 2024 16:09:51 by 1627359

Updated 16 May 2024 16:18:59 by 1627359