

# Overview

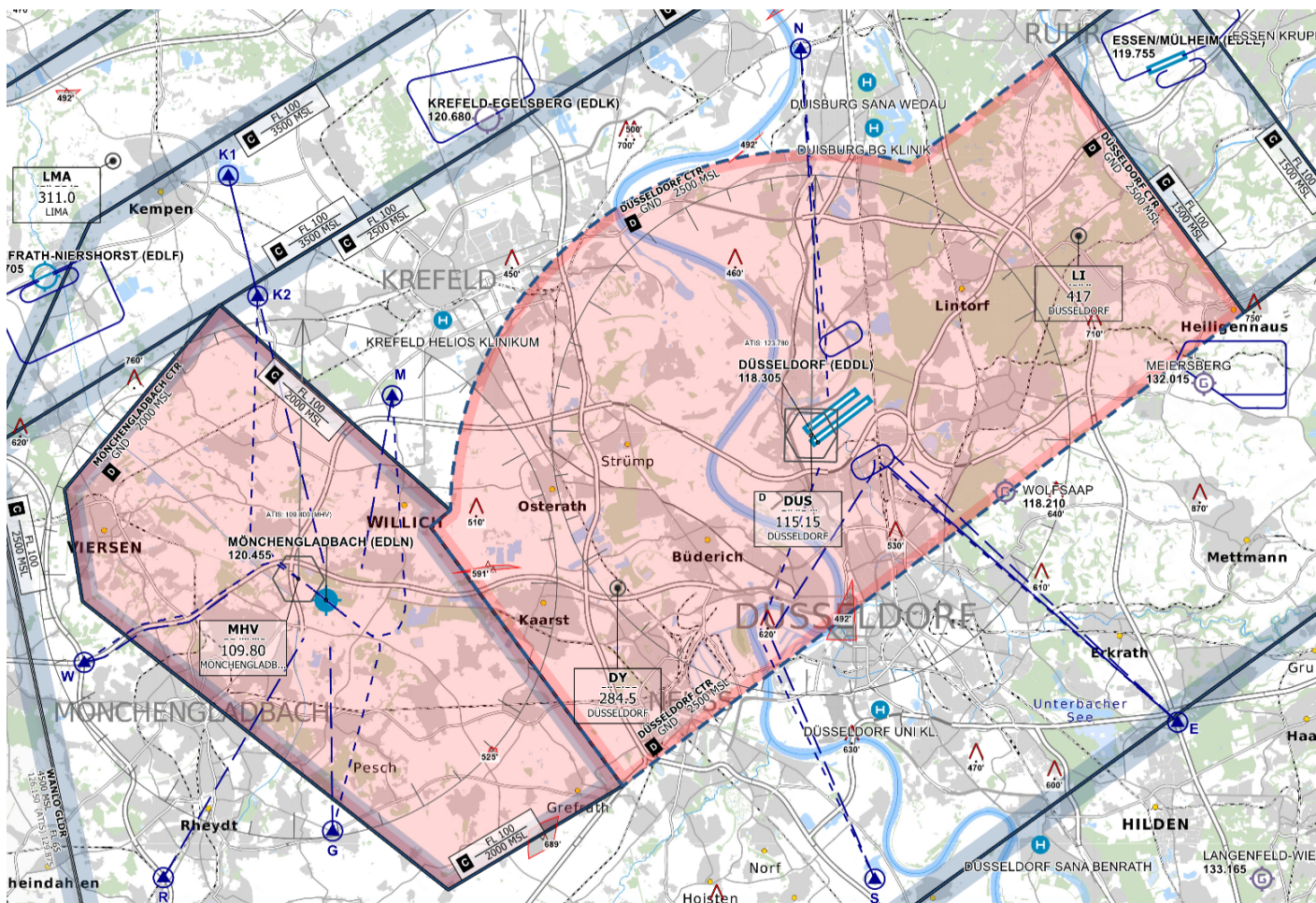
**All stations at Düsseldorf require a Tier 1 endorsement.** DEL and GND positions require the EDDL\_GNDDEL endorsement which can be acquired by all controllers with an **S1** rating or higher. TWR requires the EDDL\_TWR endorsement which can be acquired by all controllers with an **S2** rating or higher. All APP/DEP positions require the EDDL\_APP endorsement which can be acquired by all controllers with an **S3** rating or higher.

**Training:** Controllers with the S1 rating can staff TWR positions during their training (active EDDL\_TWR solo endorsement required). Controllers with the S2 rating can staff APP/DEP positions during their training (active EDDL\_APP solo endorsement required).

## Düsseldorf ATC Stations

Station	Station ID	Login	Frequency	Remarks	Endorsement
ATIS	ADL	EDDL_ATIS	123.780	--	--
Delivery	DLC	EDDL_DEL	121.780	--	Tier 1: <a href="#">EDDL_GNDDEL</a>
East Ground	DLGE	EDDL_E_GND	121.605	primary	Tier 1: <a href="#">EDDL_GNDDEL</a>
West Ground	DLGW	EDDL_W_GND	121.905	--	Tier 1: <a href="#">EDDL_GNDDEL</a>
Tower	DLT	EDDL_TWR	118.305	--	Tier 1: <a href="#">EDDL_TWR</a>
Arrival	DLA	EDDL_APP	128.555	--	Tier 1: <a href="#">EDDL_APP</a>
Director	DLAT	EDDL_F_APP	128.655	--	Tier 1: <a href="#">EDDL_APP</a>
Bottrop sector	BOT	EDDL_BOT_APP	119.110	covers DLD topdown	Tier 1: <a href="#">EDDL_APP</a>
Departure	DLD	EDDL_DEP	121.355	airborne frequency if DLD, DLA, BOT, or PADH is staffed	Tier 1: <a href="#">EDDL_APP</a>

## Controlzone



Revision #20

Created 6 September 2022 15:29:43

Updated 11 April 2024 14:01:58 by 1627359