

Overview

Geilenkirchen is a NATO base in Geilenkirchen. The airfield was originally built and used by British occupation forces after World War II and later handed over to the German Luftwaffe for a short time before becoming a NATO headquarter and the most important AWACS base in Europe. In addition to the military operations, the aeroclub Geilenkirchen conducts civilian general aviation flights at the airport, albeit primarily outside of the military operating hours.

As Geilenkirchen is a military airport, charts can't be found in the normal AIP. They are accessible through the MIL AIP, GEMIL FLIP VAD, and CENOR FLIP in the [milais](#).

Geilenkirchen is an unrestricted airport. The Tower position can be staffed by all controllers with an **S2** rating or higher. The radar position can be staffed by all controllers with an **S3** rating or higher, although it is **recommended to hold the EDDL_APP Tier 1 endorsement** for familiarity with the surrounding airspace. Additionally, controllers should closely familiarize themselves with military procedures before staffing the airport.

Geilenkirchen ATC Stations

Station	Station ID	Login	Frequency	Remarks	Endorsement
ATIS	ATNG	ETNG_ATIS	118.090	--	--
Tower	TNGT	ETNG_TWR	120.055	military station	unrestricted: no course
Arrival	TNGA	ETNG_APP	123.730	military station	unrestricted: no course
Bottrop sector	BOT	EDDL_BOT_APP	119.110	--	Tier 1: EDDL_APP

All stations at Geilenkirchen use the **callsign "Frisbee"**, e.g. "Frisbee Radar".

Quickview

TOWER QUICKSHEET GEILENKIRCHEN AIR BASE (ETNG) 292 ft

up to date for: AIRAC 2405

Runway 27	↑ climb via SID
Runway 09	

ENROUTE CLEARANCE

min. 3000ft ↑	1B	KENUM	1A	min. 3000ft ↑
min. 3000ft	1B	MILGI	1A	min. 3000ft
min. 3000ft	NG91	ZELTI	NG81	min. 3000ft
min. 3000ft ↑	NG96	LNO	NG86	min. 3000ft ↑
	NG209	any	NG227	

! IFR departures require departure release by **Frisbee**
Radar or Beek Approach prior to takeoff clearance

HANDOFFS

PADH	Paderborn High	135.650
DLA	Düsseldorf Arrival	128.555
BOT	Bottrop	119.110
ACW	Amsterdam West	125.750
ACE	Amsterdam East	124.880
ACS	Amsterdam South	123.850
ABK	Beek Approach	123.980
TNGA	Frisbee Radar	123.730

SEPARATION

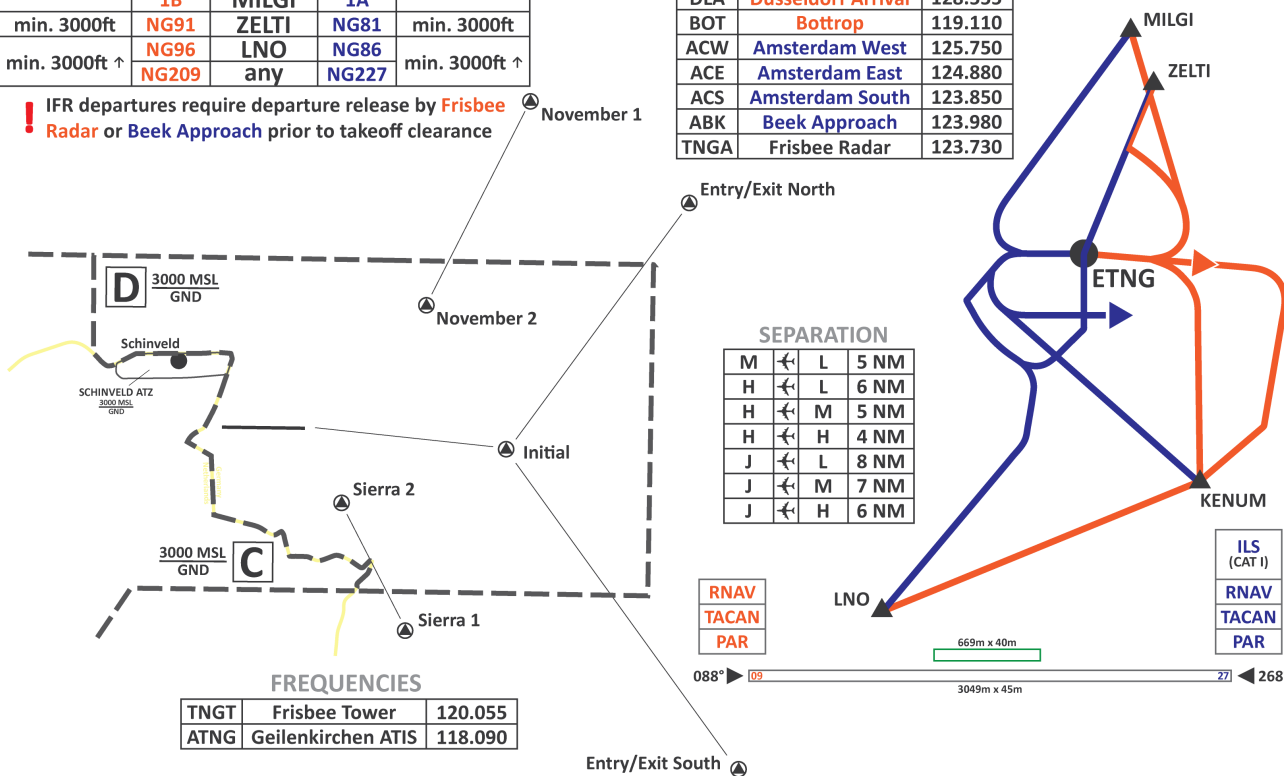
M	←	L	5 NM
H	←	L	6 NM
H	←	M	5 NM
H	←	H	4 NM
J	←	L	8 NM
J	←	M	7 NM
J	←	H	6 NM

RNAV
TACAN
PAR

ILS (CAT I)
RNAV
TACAN
PAR

FREQUENCIES

TNGT	Frisbee Tower	120.055
ATNG	Geilenkirchen ATIS	118.090



click on the image to open the printable quicksheet

Revision #1

Created 16 May 2024 16:18:25 by 1627359

Updated 16 May 2024 16:18:59 by 1627359