

Overview

Karlsruhe/Baden-Baden is an **unrestricted airport** and **part of the S1 minor program**. All positions can be staffed by all controllers with an **S1** rating or higher who have passed the **required moodle courses**.

Karlsruhe/Baden-Baden ATC Stations

Station	Station ID	Login	Frequency	Remarks	Endorsement
ATIS	ASB	EDSB_ATIS	121.280	--	--
Ground	SBG	EDSB_GND	121.830	--	unrestricted: EDSB CBT
Tower	SBT	EDSB_TWR	134.105	--	unrestricted: EDSB CBT

All aerodrome stations at Karlsruhe/Baden-Baden use the **callsign "Baden"**, e.g. "Baden Tower".

Quickview

TOWER QUICKSHEET
KARLSRUHE/BADEN-BADEN AIRPORT (EDSB)
409 ft

up to date for: AIRAC 2309

Runway 21	↑ climb via SID
Runway 03	

ENROUTE CLEARANCE

FL70 ↑	1Y	GAGSI	2Z	FL70
	5N		6P	↑ FL70
	1Y	TUBLO	2Z	FL70
	9N			
	1Y	STR (Strasbourg)	1Z	FL70
			6P	FL70

! IFR departures require departure release
by Langen Radar prior to takeoff clearance

FREQUENCIES

SBT	Baden Tower	134.105
SBG	Baden Ground	121.830
ASB	ATIS	121.280

NAV AIDS

IKBW	ILS or LOC 21	108.75
IKBE	ILS or LOC 03	109.95
KBD	DME	115.80
KBA	NDB	431

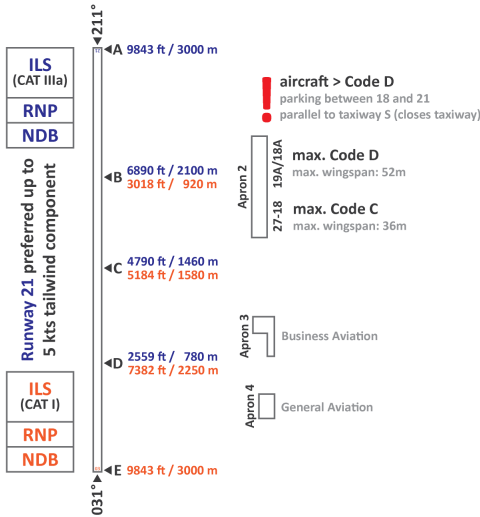
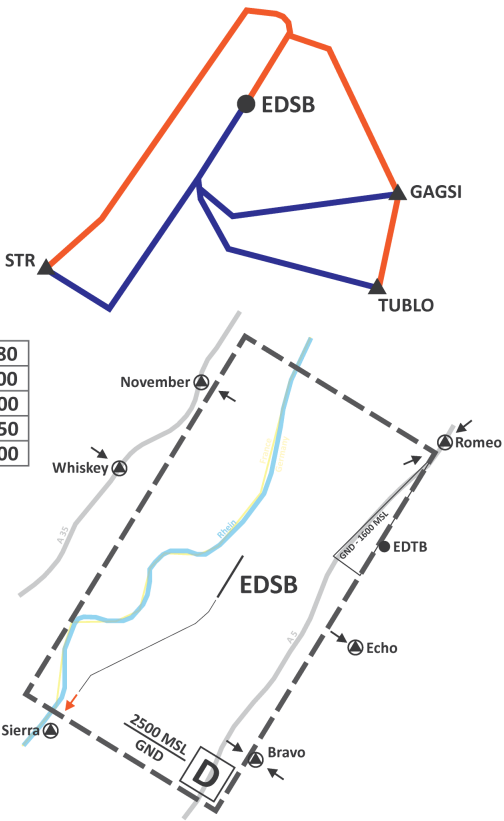
HANDOFFS

KTG	Kitzingen	123.280
DKB	Dinkelsbühl	125.200
BAD	Baden	131.300
STG	Stuttgart	125.050
REU	Reutlingen	119.200

SEPARATION

M	←	L	5 NM
H	←	L	6 NM
H	←	M	5 NM
H	←	H	4 NM
J	←	L	8 NM
J	←	M	7 NM
J	←	H	6 NM

! 5 NM spacing between
departures on the same SID



[click on the image to open the printable Quicksheet](#)

Revision #10
Created 2 September 2022 13:57:41
Updated 21 March 2024 01:02:34 by 1627359