

Overview

Nörvenich is a Bundeswehr base in Nörvenich. Originally built as an RAF base after World War II, it was transferred to the German military almost immediately after construction was completed and became the first airport of the newly formed German Luftwaffe. Today, it is home to the Taktische Luftwaffengeschwader 31 and a SAR helicopter from the Transporthubschrauberregiment 30. Additionally, it serves as an alternate for aircraft stationed at Geilenkirchen and Büchel air base.

As Nörvenich is a military airport, charts can't be found in the normal AIP. They are accessible through the MIL AIP, GEMIL FLIP VAD, and CENOR FLIP in the [milais](#).

Nörvenich is an unrestricted airport. The Tower position can be staffed by all controllers with an **S2** rating or higher. The radar position can be staffed by all controllers with an **S3** rating or higher, although it is **recommended to hold the EDDK_APP Tier 1 endorsement** for familiarity with the surrounding airspace. Additionally, controllers should closely familiarize themselves with military procedures before staffing the airport.

Nörvenich ATC Stations

Station	Station ID	Login	Frequency	Remarks	Endorsement
Tower	TNNT	ETNN_TWR	136.205	military station	unrestricted: no course
Arrival	TNNA	ETNN_APP	129.055	military station	unrestricted: no course
Arrival (EDDK)	DKA	EDDK_APP	135.350	--	Tier 1: EDDK_APP

Quickview

TOWER QUICKSHEET FLIEGERHORST NÖRVENICH (ETNN) 380 ft

up to date for: AIRAC 2405

Runway 24	↑ climb via SID
Runway 06	

ENROUTE CLEARANCE

min. 3000ft ↑	NN106	any	NN224	min. 4000ft ↑
			NN124	

! IFR departures require departure release by
Nörvenich Radar prior to takeoff clearance

HANDOFFS

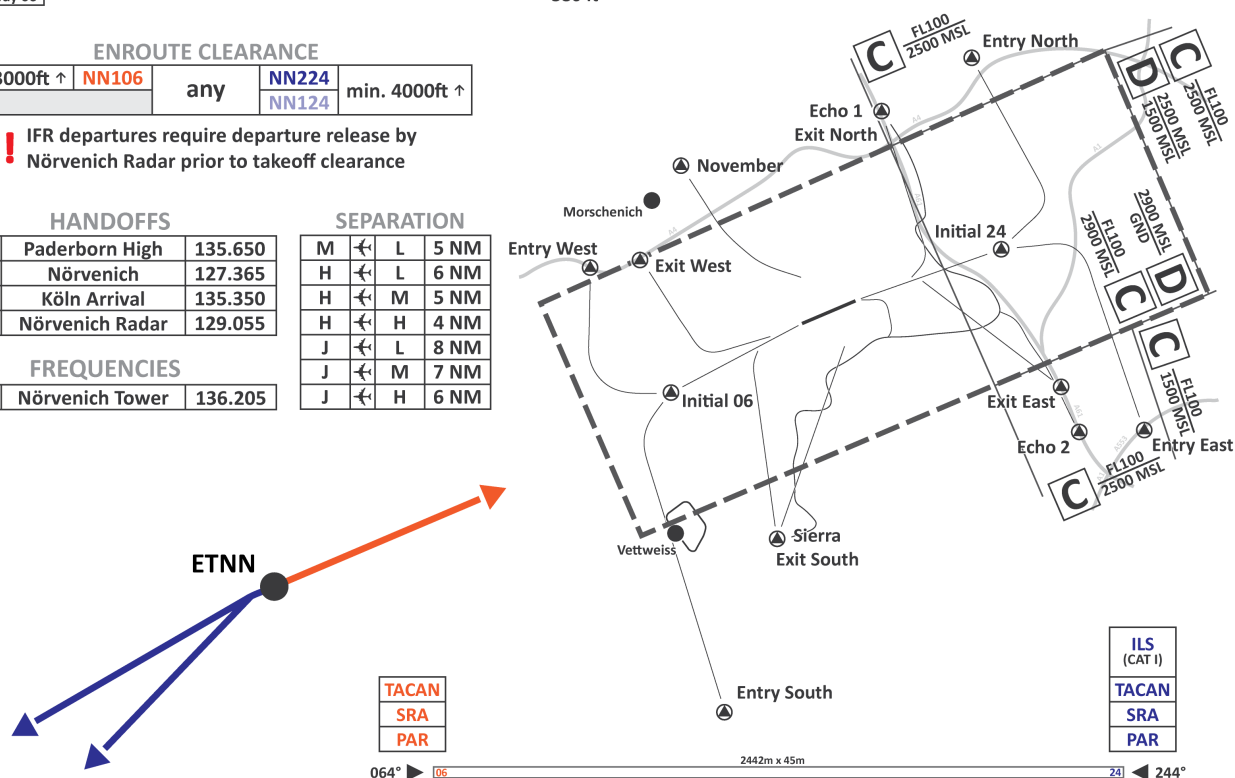
PADH	Paderborn High	135.650
NOR	Nörvenich	127.365
DKA	Köln Arrival	135.350
TNNA	Nörvenich Radar	129.055

FREQUENCIES

TNNT	Nörvenich Tower	136.205
------	-----------------	---------

SEPARATION

M	↔	L	5 NM
H	↔	L	6 NM
H	↔	M	5 NM
H	↔	H	4 NM
J	↔	L	8 NM
J	↔	M	7 NM
J	↔	H	6 NM



click on the image to open the printable quicksheet

Revision #4

Created 29 December 2022 10:01:02 by 1424877

Updated 16 May 2024 15:58:41 by 1627359