

Overview

Köln/Bonn is a complex airport with crossing runways and very little space on the ground and in the TMA. On VATSIM, it usually has a medium amount of traffic but will regularly operate at or even above capacity during events.

Köln/Bonn is an unrestricted airport. DEL and GND are unrestricted and can be staffed by all controllers with an S1 rating or higher who have passed the **required moodle courses**. TWR position requires the EDDK_TWR Tier 1 endorsement which can be acquired by all controllers with an **S2** rating or higher. All radar positions require the EDDK_APP Tier 1 endorsement which can be acquired by all controllers with an **S3** rating or higher.

Due to the high amount of complexity of the airport, it is highly recommended that **S1-rated controllers** have gained a great deal of experience at other unrestricted airports before staffing positions at Köln/Bonn.

Training: Controllers with the S1 rating can staff TWR during their training (active EDDK_TWR solo endorsement required). Controllers with the S2 rating can staff APP positions during their training (active EDDK_APP solo endorsement required).

With AIRAC 2404, the runway designators in Köln/Bonn were changed from 14/32 to 13/31. This can cause issues for pilots using MSFS if they are using AIRAC 2404 or later but have a scenery with the old designators as **they will not be able to select certain runway-specific procedures such as the SID** in their FMS. If a pilot reports this issue, **please refer them to [this addon](#)** which will allow them to select runway-specific procedures even with an outdated scenery. Whenever possible, **controllers should find workarounds that do not require pilots to restart their simulator**, e.g. using a conventional SID to NVO or WYP, potentially followed by radar vectors.

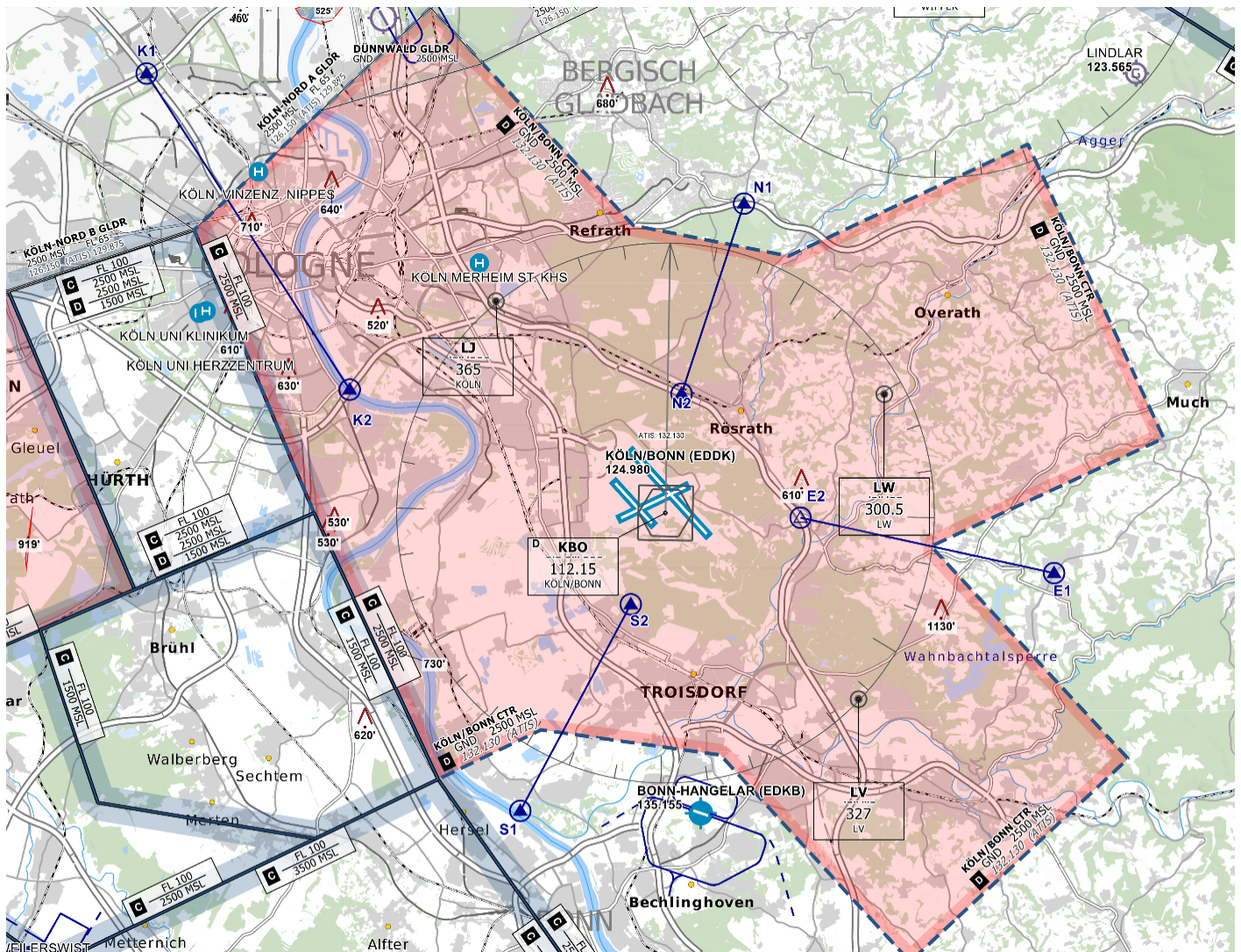
Köln/Bonn ATC Stations

Station	Station ID	Login	Frequency	Remarks	Endorsement
ATIS	ADK	EDDK_ATIS	132.130	--	--
Delivery	DKC	EDDK_DEL	121.855	--	unrestricted: EDDK CBT Delivery

Ground	DKG	EDDK_GND	121.730	--	unrestricted: EDDK CBT Delivery & EDDK CBT Ground
Apron	DKGP	EDDK_P_GND		staffing forbidden	staffing forbidden
Tower	DKT	EDDK_TWR	124.980	--	Tier 1: EDDK_TWR
Approach (Pickup)	DKA	EDDK_APP	135.350	--	Tier 1: EDDK_APP
Arrival (Feeder)	DKAT	EDDK_F_APP	121.055	--	Tier 1: EDDK_APP
Nörvenich sector	NOR	EDDK_NOR_APP	127.365		Tier 1: EDDK_APP

Staffing of Apron (DKGP/EDDK_P_GND) is **currently prohibited**.

Controlzone



Cologne-Bonn Controlzone (D-CTR) - © openflightmaps.org

Revision #19

Created 10 September 2022 11:57:01

Updated 28 November 2024 20:47:02 by 1288197