

Overview

Traffic at the airport is usually characterized by VFR and holiday flights, mixed with some scheduled flights. A specialty of Münster/Osnabrück are the two uncontrolled grass runways North of the hard surface runway.

Münster/Osnabrück is an unrestricted airport and **part of the S1 minor program**. GND and TWR can be staffed by all controllers with an **S1** rating or higher who have passed the **required moodle courses**. The Hamm sector (APP) and Münster/Osnabrück Director can be staffed by all controllers with an **S3** rating or higher.

Münster/Osnabrück ATC Stations

Station	Station ID	Login	Frequency	Remark	Endorsement
ATIS	ADG	EDDG_ATIS	127.180	--	--
Ground	DGG	EDDG_GND	121.880	--	unrestricted: <u>EDDG GND & TWR CBT</u>
Tower	DGT	EDDG_TWR	129.805	--	unrestricted: <u>EDDG GND & TWR CBT</u>
Director	DGAT	EDDG_F_APP	129.180	relief position	unrestricted: no course
Hamm sector	HMM	EDDG_HMM_APP	129.300	airborne frequency if HMM or PADH is staffed	unrestricted: no course

All aerodrome stations at Münster/Osnabrück use the **callsign "Münster"**, e.g. "Münster Tower".

The Director station uses the full airport name as the callsign, i.e. "Münster/Osnabrück Director".

The normal radar station uses the default "Langen Radar" callsign.

Quickview

TOWER QUICKSHEET MÜNSTER/OSNABRÜCK AIRPORT (EDDG) 159 ft

up to date for: AIRAC 2403

Runway 25 ↑ climb via SID
Runway 07

ENROUTE CLEARANCE

5000ft	2Y	DOMEG	2Z	5000ft
5000ft	3E		2C	5000ft
	9E		9X	5000ft
5000ft ↑	9Y	OSN (Osnabrück)	2C	5000ft
			1C	5000ft
5000ft	2E	RKN (Rekken)		
	3Y	HMM (Hamm)	1Z	5000ft

RKN

EDDG

OSN

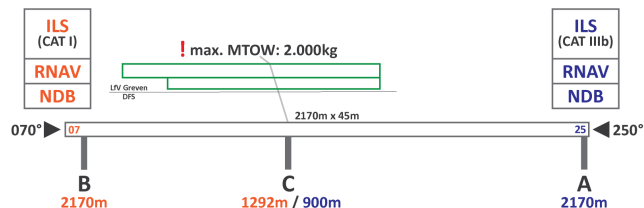
SEPARATION

M	←	L	5 NM
H	←	L	6 NM
H	←	M	5 NM
H	←	H	4 NM
J	←	L	8 NM
J	←	M	7 NM
J	←	H	6 NM

5 NM spacing between
departures on the same SID

DOMEG

HMM

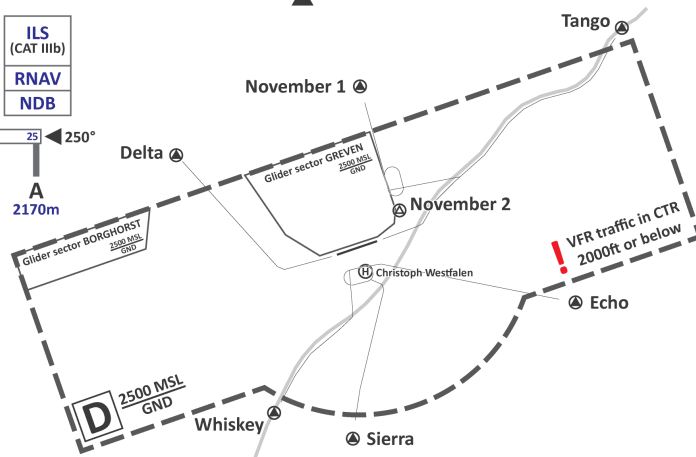


FREQUENCIES

DGT	Münster Tower	129.805
DGG	Münster Ground	121.880
ADG	ATIS	127.180

HANDOFFS

PADH	Paderborn High	135.650
HMM	Hamm	129.300
DGAT	Münster Director	129.180



[click on the image to open the printable quicksheet](#)

Revision #26

Created 29 September 2022 17:57:01

Updated 8 May 2024 20:34:37 by 1627359