

Overview

Saarbrücken is an unrestricted airport and **part of the [S1 minor program](#)**. GND and TWR can be staffed by all controllers with an **S1** rating or higher who have passed the required moodle courses. The Pfalz sector (APP) can be staffed by all controllers with an **S3** rating or higher.

ATC Stations

Station	Station ID	Login	Frequency	Remarks	Endorsement
ATIS	ADR	EDDR_ATIS	125.480	--	--
Ground	DRG	EDDR_GND	118.555	--	unrestricted: EDDR CBT
Tower	DRT	EDDR_TWR	118.355	--	unrestricted: EDDR CBT
Pfalz sector	PFA	EDDR_PFA_APP	129.675	--	unrestricted: no course

Quickview

TOWER QUICKSHEET SAARBRÜCKEN AIRPORT (EDDR) 1058 ft

up to date for: AIRAC 2309

Runway 27 ↑ climb via SID
Runway 09

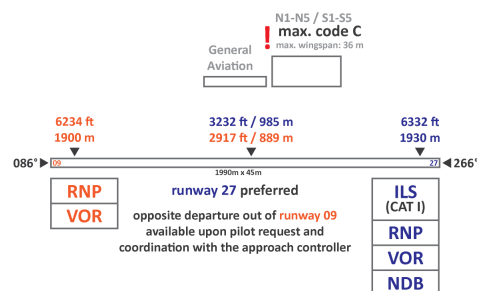
ENROUTE CLEARANCE

4000ft ↑	1L 1K	TOMPI	1M 1N	↑ 4000ft
prop MTOW ≤ 5.7t			prop MTOW ≤ 5.7t	
4000ft ↑	6E		4W	
4000ft	1L 8E	ZWN (Zweibrücken)	1M 5W	↑ 4000ft
	1E			
FL80 ↑	1L 1E	GTQ (Grostenquin)	1M 9W	↑ FL80

! IFR departures require departure release by Langen Radar prior to takeoff clearance

FREQUENCIES

DRT	Saarbrücken Tower	118.355
DRG	Saarbrücken Ground	118.555
ADR	ATIS	125.480



SEPARATION

M	←	L	5 NM
H	←	L	6 NM
H	←	M	5 NM
H	←	H	4 NM
J	←	L	8 NM
J	←	M	7 NM
J	←	H	6 NM

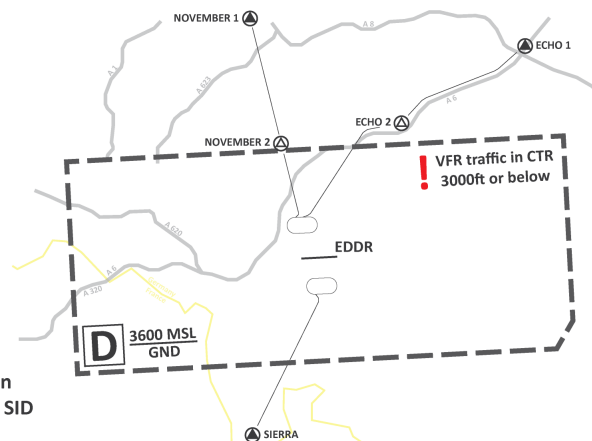
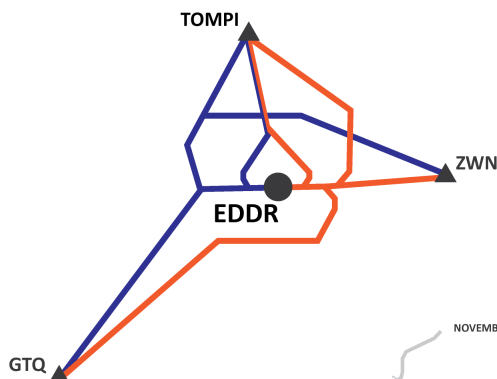
! 5 NM spacing between departures on the same SID

HANDOFFS

KTG	Kitzingen	123.280
GIN	Gießen	124.730
RUD	Rüdesheim	133.435
EIF	Eifel	125.600
PFA	Pfalz	129.675

NAV AIDS

DSB	ILS or LOC 27	111.10
ZWN	VOR	114.80
SAD	DME	116.75



click on the image to open the printable Quicksheet

Revision #14

Created 4 September 2022 14:46:12

Updated 20 March 2024 22:47:26 by 1627359