

# Tower

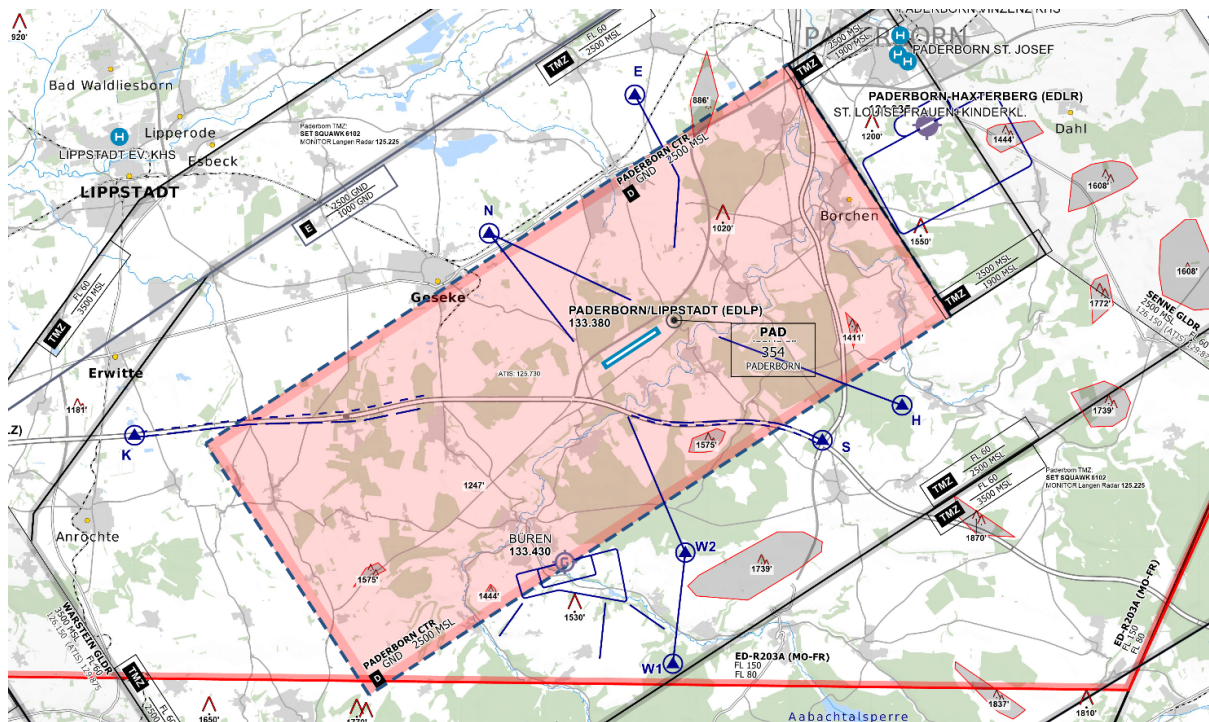
Paderborn Tower is responsible for all aircraft within the control zone and at the active runway.

**Runway in use:** There is no preferred operation direction at Paderborn.

**Approaches:** For both runways ILS (CAT I), RNP and NDB approaches are available.

## Control Zone

The control zone of Paderborn reaches up to 2500 ft AMSL.



Paderborn/Lippstadt Control Zone (D-CTR) - © [openflightmaps.org](https://openflightmaps.org)

VFR traffic entering or leaving the CTR via **SIERRA** need to cross the reporting point between 2200 and 2500 ft MSL.

**TMZ:** Outside the control zone is a TMZ where all VFR aircraft have to set transponder code 6102.

**Paderborn-Haxterberg:** The airfield Paderborn-Haxterberg EDLR is located north-east close to the border of the CTR. Traffic within the traffic pattern have to stay clear of the control zone and are independant.

**Helicopter:** As there are no helipads available at Paderborn, all departures and arrivals of helicopters have to take place at the active runway, followed/preceded by airtaxi.

# Auto-Handoff

Paderborn utilizes an auto-handoff procedure for IFR departures where **Tower will not hand off outbounds to the approach/center controller**. Make sure to set the correct departure frequency in the ATIS.

Outbounds should contact APP/CTR **immediately when airborne** unless explicitly told to remain on Tower frequency.

---

Revision #7

Created 14 October 2022 14:50:22 by 1288197

Updated 29 February 2024 19:40:25 by 1288197