

# Tower

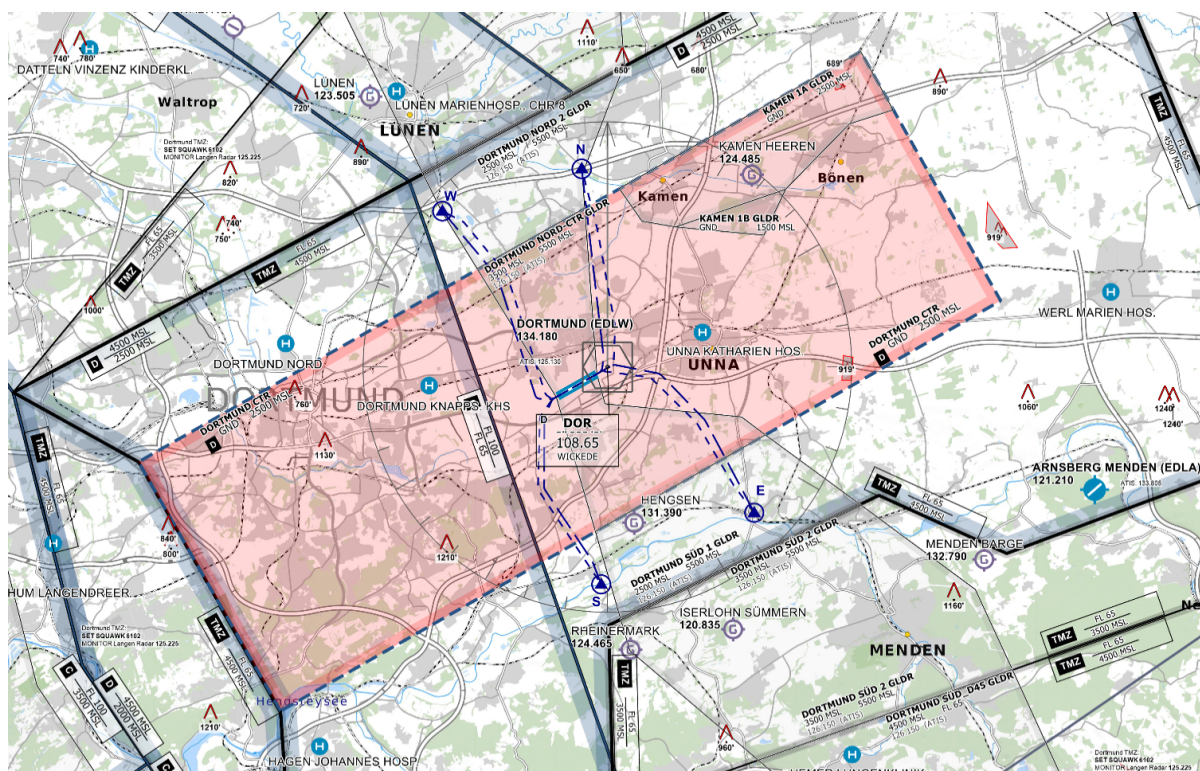
Dortmund Tower is responsible for all aircraft within the control zone and at the active runway.

**Approaches:** For both runways ILS (CAT II), RNP, VOR and NDB approaches are available.

## Control Zone

The control zone of Dortmund reaches up to 2500 ft AMSL.

24 Operations	06 Operations
<b>VFR Entry:</b> N and E <b>VFR Exit:</b> W and S	<b>VFR Entry:</b> W and S <b>VFR Exit:</b> N and E



Dortmund Control Zone (D-CTR) - © [openflightmaps.org](https://openflightmaps.org)

**TMZ:** Outside the control zone is a TMZ where all VFR aircraft must set transponder code 6102.

**Helicopter:** The Helipad west of the GAT can be used for all helicopter landings and departures.

## Direction of Operation

Operating direction 24 is preferred up to a tailwind component of 5 KT.

# Auto Handoff

Dortmund utilizes an auto-handoff procedure for IFR departures where **Tower will not hand off outbounds to the approach/center controller**. Make sure to set the correct departure frequency in the ATIS.

Outbounds should contact APP/CTR **immediately when airborne** unless explicitly told to remain on Tower frequency.

---

Revision #5

Created 2 October 2022 13:43:41

Updated 29 February 2024 19:42:43 by 1288197