

EDJA - Memmingen Airport

- [Overview](#)
- [Ground](#)
- [Tower](#)

Overview

Memmingen ATC Stations

Station	Station ID	Login	Frequency	Remark
ATIS	JAX	EDJA_ATIS	118.855	--
Ground	JAG	EDJA_GND	121.680	--
Tower	JAT	EDJA_TWR	126.855	--
Muenchen Radar (Sektor Iller)	ILR	EDJA_ILR_APP	129.450	--

Local agreements

- Aircraft are not tracked by ground stations in Euroscope
- Missed approaches "as published", deviations only in exceptional cases and after coordination

Ground

Memmingen Ground is responsible for the start-up and enroute clearance of IFR departures, for which no coordination with München Radar is required. VFR traffic does not require a start-up clearance. Ground is also responsible for taxi control.

IFR departures

SID assignment

Memmingen has published IFR departure procedures in both operating directions

Endpoint	SID	RWY	Initial Climb	After Departure	Remark
KPT <i>Kempten</i>	4B	06	FL70	contact München Radar 129.450	RNAV-1 or RNP-1 or A-RNP equivalent. GPS required.
	4A	24			
LUPOL	5B	06			
	5A	24			
UMTEX	2B	06			
	1A	24			
ALG <i>Allgäu</i>	1U	06			For non RNAV-1 equipped ACFT, training FLTS or by ATC only.
	1T	24			

Ground operation

General

EDJA is a former air force base that has been converted for civilian use. This can be seen from the fact that all taxiways are narrower than the ICAO standard and many of them are closed due to a

lack of demand and renovation. More attention must be paid than at other airports to ensure that pilots do not inadvertently taxi onto closed areas and taxiways.

Restrictions on taxiways

Taxiways "S" and "P" are restricted to aircraft with a maximum outer main gear wheel span of 6 metres. This means that they cannot be used by conventional commercial aircraft, at most by smaller business jets and GA aircraft.

Aprons and terminals

The passenger terminal is located on Apron 1 (Stands 1 & 2). Further parking spaces for airliners are located on Apron 2. Apron 3 south of the runway serves as GA parking, where the GAT is also located (only accessible for small aircraft due to the restriction of TWY P).

Pushback is only necessary from the stands at Terminal 1 (Stands 1 and 2) and Stand 6, all other stands are "taxi-in/out".

Tower

Memmingen Tower is responsible for aerodrome control at Memmingen Airport. Memmingen has a D-CTR.

IFR departures

IFR departures are to be handed over with radar or wake turbulence separation. IFR departures via the same SID are to be handed over with 5 NM or (if higher) wake turbulence separation. The Tower is responsible for separation between IFR departures and between IFR departures and IFR approaches on a missed approach procedure until the transfer of communications of all flights involved.

IFR arrivals

IFR approaches are handed over to Memmingen Tower by München Radar using one of the published approach procedures, taking into account radar or (if required) wake turbulence separation. München Radar is responsible for the separation, speed assignments from the tower are not permitted without coordination with München Radar.

IFR visual approaches

No special requirements. München Radar may only clear IFR visual approaches after coordination with Memmingen Tower.

Use of runway

Due to the restriction of TWY "S" and "P", larger aircraft/airliners can only use TWYs "W" and "N". For this reason, landings on runway 06 and take-offs on 24 backtracks are necessary. There are no turnaround pads, the aircraft must turn on the runway.

The formerly offset threshold of runway 06 has been removed, the area to the west of junction W has been declared a stopway and cannot be used for take-off runs.

Intersection takeoffs are permitted:

- **Piste 06:** via C, D, N, S
- **Piste 24:** via C, D, E, N, S

RWY Designator	TORA (m)	TODA (m)	ASDA (m)	LDA (m)
1	2	3	4	5
06	2630	2735	2630	2630
TWY C	1750	1855	1750	NIL
TWY D	1570	1675	1570	NIL
TWY N	1570	1675	1570	NIL
TWY S	1750	1855	1750	NIL
24	2630	2785	2830	2401
TWY C	885	1040	1085	NIL
TWY D	1065	1220	1265	NIL
TWY E	2005	2160	2205	NIL
TWY N	1070	1225	1270	NIL
TWY S	885	1040	1085	NIL

Low visibility procedures

Experience shows that minima problems occur more frequently in Memmingen due to low cloud cover than due to fog (due to the location of the aerodrome on a mountain ridge).

- ILS Cat I (DH 200 ft / RVR 550 m) are available on both runways.
- Low Visibility Takeoffs (LVTO) up to RVR 75 m are permitted on both runways.
- The preparation phase for Low Visibility Procedures begins as soon as RVR <1000m.
- LVP come into force as soon as RVR <600m.
- For RVR <400m LVTO conditions apply (see below)
- Flight operations are no longer possible at RVR <75m.
- LVP end as soon as the RVR exceeds 600m.

Under LVP, intersection takeoffs are not permitted. Under LVTO conditions, only one aircraft at a time may move within the area of responsibility of air traffic control (i.e. on all TWYs and the RWY).

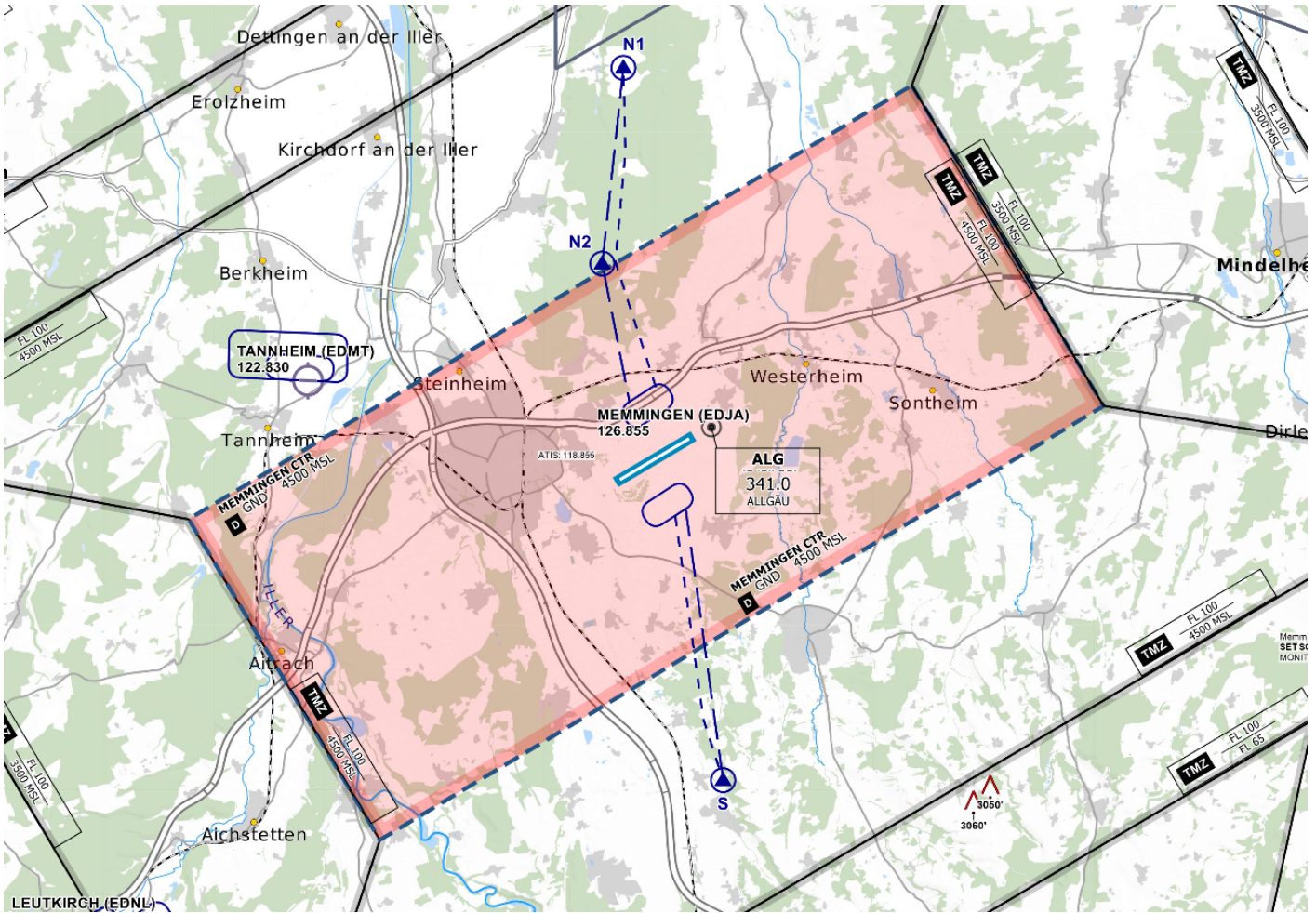
As the ILS only allow Cat I, but LVTO is permitted, this means that at RVR between 75 - 550m it is only possible to take off, but not to land.

Deicing is carried out at the stand.

VFR traffic

The D-CTR is surrounded by airspace E/G with only one TMZ as an additional protected area.

For noise abatement reasons, the southern traffic circuit should preferably be used.



Helicopters

There is no helipad. Helicopters use the runway.